



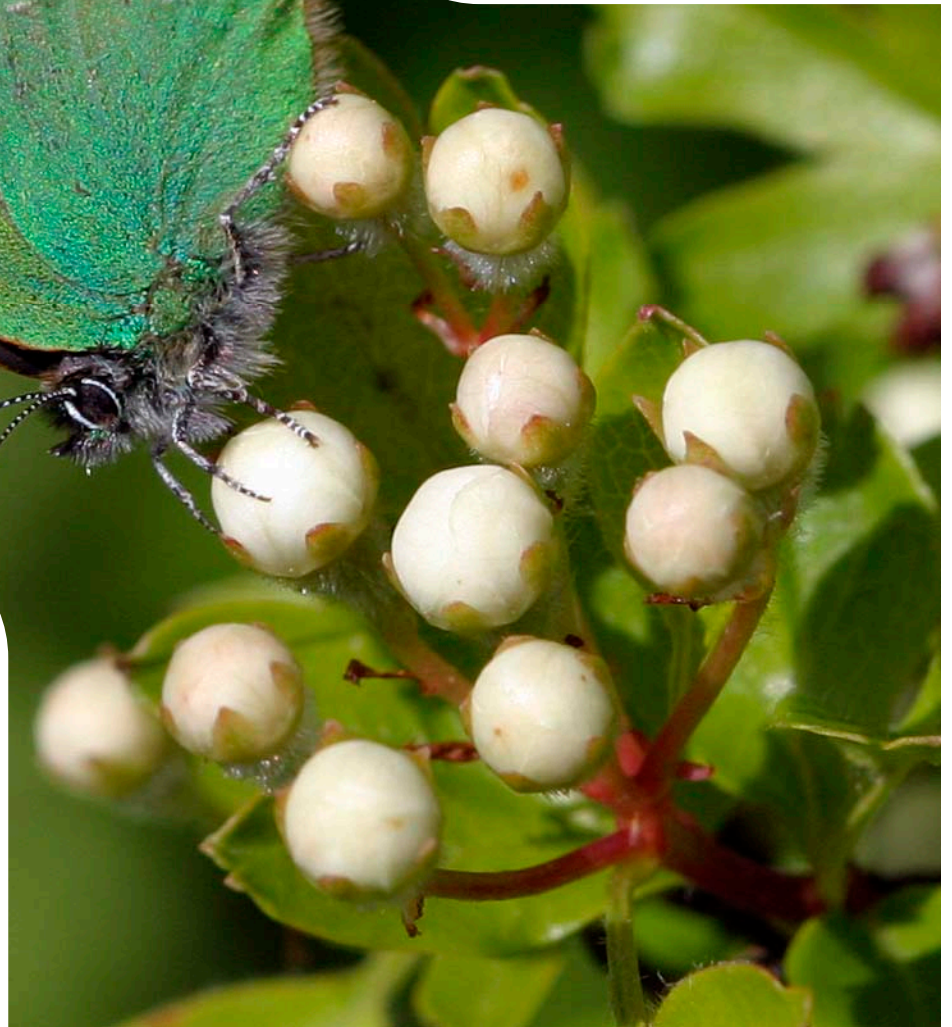
WARWICKSHIRE



Warwickshire Butterfly Action Plan 2005 – 2009

(2007 Update)

By
Mike Slater





Butterfly
Conservation

WARWICKSHIRE BUTTERFLY ACTION PLAN 2005-2009

(2007 UPDATE)

By
Mike Slater

BRANCH EMAIL: enquiries@warwickshire-butterflies.org.uk

BRANCH WEB SITE: www.warwickshire-butterflies.org.uk

BUTTERFLY CONSERVATION

COMPANY LIMITED BY GUARANTEE, REGISTERED IN ENGLAND (2206468)

REGISTERED OFFICE: MANOR YARD, EAST LULWORTH, WAREHAM, DORSET BH20 5QP

TELEPHONE: 0870 7744309. FAX: 01929 400210. EMAIL: info@butterfly-conservation.org

WEB SITE: www.butterfly-conservation.org

CHARITY REGISTERED IN ENGLAND & WALES (254937) AND IN SCOTLAND (SCO39268)

VAT No. 565 9070 16

Contents

Key to Tables	4
---------------	---

Species Accounts: -

Dingy Skipper	5
Grizzled Skipper	14
Wood White	23
Green Hairstreak	26
Brown Hairstreak	31
Small Blue	32
White Admiral	34
Purple Emperor	40
Dark Green Fritillary	42
Silver-washed Fritillary	45

Appendices: -

Warwickshire 10k Squares	47
Suggested Target Locations & Missing Species	48
Butterfly Sites	49

Acknowledgements

Thanks to Keith & Heather Warmington for help with production of this report and to all butterfly recorders and transect walkers in Warwickshire for their invaluable data.

I am grateful to the following land owners for access to butterfly sites: - CEMEX, Forestry Commission, Warwickshire Wildlife Trust, Natural England, DEFRA, British Waterways, Severn Trent Water, Railtrack, Highways Agency, Warwickshire County Council (Highways, Country Parks), BIFFA, Hanson Aggregates, Follet Holdings, Friends of Brandon Wood, Defence Estates, the District Councils of Stratford, Warwick, Rugby, Nuneaton & Bedworth, North Warwickshire and the Metropolitan Councils of Coventry, Solihull and Birmingham.

For their continued support, sponsorship and promotion of conservation management, thanks also go to Barclays Bank, Carillion, Tom White Skips, Lafarge and the County Ecologists and Record Centres of Warwick, Solihull and Birmingham.

Warwickshire Butterfly Action Plan 2005-2009 (2007 Update)

The purpose of this report is to provide the annual conservation update on the status of Warwickshire's butterflies. The update is as a result of monitoring and survey work that took place between 2005 and 2007.

The primary and minimum conservation aim of the Warwickshire Branch is to visit every known and potential key butterfly site at least once and ideally twice during the recording period 2005 to 2009 (Millennium Atlas Survey - Phase 3).

Key to Tables

Year	Last year that a key species was recorded.
Last Visit	Last year a key site was surveyed for that key species.
Size	Estimated average population size based on number likely to be seen during one visit at peak flight time.
A	1
B	2 to 9
C	10 to 29
D	30 to 99
E	Greater than 100
V	One individual seen thought to be a vagrant or of doubtful origin.
X	A site where the colony is believed to be extinct.

P1 Potential Site

- Within core landscape/ meta-population area
- Has large area of breeding habitat
- High potential for colonisation by the key species

P2 Potential Site

- Within core landscape/ meta-population area
- Has some breeding habitat
- Known colony site for the key species but no records in recent period
- Medium to high chance that a colony still remains

P3 Potential Site

- Within core landscape/ meta-population area
- Very little or no breeding habitat
- Key species extinct due to habitat deterioration
- Brownfield site that could be developed and made into suitable habitat.
- Low to medium chance of re-colonisation if site managed appropriately

Dingy Skipper – *Erynnis tages*

Colony History

2009	2008	2007	2006	2005	P1	P2	P3	Total Extinct	Pre 1990	1990-2000	2000-2005
		14	22	2	3		34	48	17	29	2

Meta-Population History

Total Known Pre 1990	Total Known Pre 2000	Total Known Pre 2005	Extant
10	9	7	5

Action	Target	Progress	Comment
Increase/confirm 40 colonies by 2009.	40 Extant colonies.	2007 38 colonies confirmed.	Increase colonies by 2.
Between 2006 & 2010 resurvey all known and potential sites for the Dingy Skipper.	Survey 88 sites.	82 sites surveyed by 2007.	6 sites need further survey.
Increase to 10 colonies monitored by 2009.	Monitor 10 colonies.	11 sites monitored during 2007.	Sustain current monitoring.

North Warwickshire Meta-population

Dingy Skipper -

2009	2008	2007	2006	2005	P1	P2	P3	Total Extinct	Pre 1990	1990-2000	2000-2005
		5	6			1 (X)	1(1 X)	8	1	7	0

Change - Between 7 and 8 colonies appear to have become extinct. Following recent survey work 11 colonies have been confirmed. Kingsbury Water Park and Minworth Water Works need resurveying.

Site Name	Grid Ref.	Year	Last Visit	Size	Comment
Pooley Fields West Polesworth	SK257035	2007	2007	B/C	Stable after footpath work carried out.
Pooley Fields East Polesworth	SK260036	2007	2007	C	Strong stable colony. Scrub management carried out.
Kingsbury Colliery Spoilheap	SP234982	2007	2007	C	Strong stable colony.
Rush Lane Dosthill Biffa/Hanson	SP220996	2006	2006	B	Needs re-survey. Very little foodplant.
Rush Lane Dosthill Old Clay Colliery	SP217994	2006	2007	B	No foodplant found.

Rush Lane Dosthill Restored Landfill	SP215990	2006	2006	C	Topsoil spread over site. Needs re-survey.
Baddesley Spoilbank/Black Path	SP274976	2007	2007	B/C	Stable colony.
Grendon Common	SP278981	2007	2007	A/B	Very little foodplant.
Wilncote Doulton Works Heather Area Tamworth Staffs	SK219018	2006	2006	B	Needs re-survey.
Kingsbury Rifle Range	SP227961	2006	2006	B	Scrub encroachment and lack of foodplant major problem.
Kingsbury Link Picadilly	SK230981	2006	2006	B	Fragment from Kingsbury Colliery colony.
Warren Farm Warton	SK275035	1997	1990's	X	Site lost. No suitable habitat or foodplant left.
Minworth Water Works	SP184914	1994	1994	P2 X	Possible that colony still exists access difficult
Dordon Orchard/Dunns Lane Pool	SP264003	1994?		X	Site lost. No suitable habitat or foodplant left.
Freasley	SP248998	1990's	1990's	X	
Whitacre Heath	SP204926	1990's?	2005	X	
Kingsbury Water Park	SP205968	1990's	2005	P3 X	Small amount of habitat present possible site for re-colonisation.
Kettlebrook Park Staffordshire	SK230019	1990's	1990's	X	Area improved. No foodplant.
Coleshill Cutting	SP215905	1959	1990's	X	

Nuneaton Meta-population

Dingy Skipper -

2009	2008	2007	2006	2005	P1	P2	P3	Total Extinct	Pre 1990	1990-2000	2000-2005
		4	2	1		1 (1 X)	2	9	1	8	0

Change - 6 colonies have been confirmed and 8 are definitely extinct. Further survey work is needed at Boon's and Judkin's Quarries. Also the Griff Quarry area off Gypsy Lane needs surveying.

Site Name	Grid Ref.	Year	Last Visit	Size	Comment
Mancetter Quarry	SP307958	2007	2007	B/C	Substrate spread over site in 2007. Recovery will be monitored but may take 2 years.
Windmill Hill Spoilheap	SP337939	2007	2007	B	Habitat improving. Site could support medium colony.
Anchor Pools Hartshill	SP336944	2007	2007	B	Fragmented colony from Windmill Hill Spoilheap.
Newdigate Pit, Bedworth Heath	SP338869	2007	2007	B	Most of site developed. Small colony still exists on remaining habitat.
Weddington South Disused Railway	SP357935	2006	2006	A	Needs habitat re-survey. Management potential.

Weddington North Disused Railway	SP364945		1990's	P3	Requires a large amount of scrub clearance.
Judkins Quarry	SP348930	2005	2005	B	Needs further survey.
Boons/Hartshill Quarries	SP333945	1998	1990's	P2 X	Needs re-survey.
Windmill Hill Community Area	SP341934	N/A	1990's	P3	Potential site needs habitat survey.
Purley Quarry	SP305966	2007	2007	C	New site. Monitoring restricted in 2007.
Ansley Cutting	SP300911	1998	1990's	X	Scrubbed up.
Galley Common	SP320919	1998	1990's	X	Extinct built on.
Ansley Common	SP311937	1998	1990's	X	
Premier Stones	SP324929	1998	1990's	X	Extinct area now housing estate.
Ensors Pool	SP349903	1997	1990's	X	Most of site now industrial estate.
Foleshill Gasworks	SP434835	1994	1990's	X	Site developed.
Griff Quarry	SP364886	1994	1990's	X	May be extinct needs survey of active quarry area.
Whittleford Brickworks	SP335923	1979	1990's	X	Developed into amenity park reseeded.
Woodlands Quarry Hartshill Hayes	SP323948	2003	1990's	V	Sightings at Woodlands Quarry believed to be vagrants. Survey 2005 found no suitable habitat.

Rugby Meta-population

Dingy Skipper -

2009	2008	2007	2006	2005	P1	P2	P3	Total Extinct	Pre 1990	1990-2000	2000-2005
						1(X)	4	4	0	4	0

Change - Rugby Meta-population could be extinct however, if it survives further habitat is being created as a consequence of the building of the Western Relief Road.

Site Name	Grid Ref.	Year	Last Visit	Size	Comment
Malpass Quarry North/South	SP487763 SP487759	1990's	2006	P2 A	May still exist. Needs further survey work. Part of site being built on new habitat being created in other parts.
Newbold Quarry	SP494768	N/A	1990's	P3	Potential habitat. Needs surveying.
New Bilton Quarry	SP494759	N/A		P3	Potential habitat. Needs surveying.
Western relief Rd nr Parkfield Road	SP489763?		2008	P3	Potential habitat area being created.
Compensation area Nr Cawston	SP464734?		2008	P3	Potential habitat area being created.
Hillmorton Ballast Pits	SP544737	1990's	1990's	X	Site developed. No longer suitable.
Willey Cutting	SP498846	1964	1990's	X	Site scrubbed up. No longer suitable.
Easenhall Cutting	SP445795	1951	1990's	X	Site scrubbed up. No longer suitable.

Great Central Railway Line Meta-population

Dingy Skipper -

2009	2008	2007	2006	2005	P1	P2	P3	Total Extinct	Pre 1990	1990-2000	2000-2005
				1			6 (2 X)	2	0	2	0

Change - The Great Central Railway Line meta-population could be extinct there were no sightings in 2006 & 2007.

Site Name	Grid Ref.	Year	Last Visit	Size	Comment
Wolfhampcote Cutting Embankment	SP524645	2005	2006	A	Survey 2005 found habitat suitable for small colony. Site now under threat change in ownership.
Braunston Embankment (Northamptonshire)	SP537656	N/A	200?	P3	Habitat now scrubbed up. No longer suitable but still potential habitat.
Shuckborough Embankment	SP519615	N/A	2006	P3	Survey 2005 found habitat unsuitable but still potential habitat.
Newbolds Grounds Cutting (Northamptonshire)	SP520608	N/A	2006	P3	Survey 2005 found habitat unsuitable but still potential habitat.
Willoughby Viaduct South	SP524656	N/A	2006	P3	Survey 2005 found some habitat needs further survey.
Navigation Cutting	SP524686	1999	2006	X P3	Site surveyed in 2006 completely scrubbed up colony extinct.
Flecknoe Embankment	SP520624	1990's	2006	X P3	Colony not located despite recent searches. Survey 2005 found little suitable habitat.

Southam Lias Grasslands

Dingy Skipper -

2009	2008	2007	2006	2005	P1	P2	P3	Total Extinct	Pre 1990	1990-2000	2000-2005
		3	3			2 (2 X)	9 (1 X)	3	1	1	1

Change - Two colonies may have become extinct. Bishops Bowl, Nelsons Quarry, Stockton Cutting, Ufton Fields M40 slip road and Ufton Hill Farm are priorities for survey work.

Site Name	Grid Ref.	Year	Last Visit	Size	Comment
Southam Quarry	SP420635	2007	2007	C	Active Quarry. Large core colony exists.
Bishops Itchington/Hill/Heap	SP392584	2007	2007	C	Stable but site under threat for housing. Large areas scrubbed up.

Harbury Spoilbank South	SP386598	2007	2007	B/C	Survey 2006 found that recent clearance has assisted population.
Harbury Spoilbank North	SP385602	2006	2006	B	Survey 2006 found that recent scrub clearance has assisted population.
Bishops Bowl Sports	SP384589	2006	2006	B	SSSI managed by rabbit grazing. Survey 2006 found large areas of suitable habitat.
Bishops Bowl Fishing	SP385589	N/A	2006	P3	Small amount of habitat located in 2006.
Bishops Bowl Blue Lagoon	SP390587	N/A	2006	P3	Area badly scrubbed minimal foodplant present.
Ufton Fields	SP383615	2006	2007	A	Site not actively managed heavily scrubbed up colony vulnerable but still believed to exist.
Nelsons Quarry	SP445643	1990 's	2007	P2 X	Believed to still exist. Site survey 2007 found sufficient habitat for small colony. Site heavily scrubbed up.
Stockton Cutting	SP439649	2003	2006	P2 X	Colony probable extinct. Sighting 2003 may have been a vagrant. Survey 2006 found little habitat. A large amount of clearance took place 2007/08 bare areas seeded with GBT.
Ufton Hill Farm	SP392614	1970 's	2006	P3 X	Probable Colony site. Original site lost when grasslands improved and then became a quarry and landfill. Survey 2006 located suitable habitat.
Napton Reservoir	SP467634	N/A	2006	P3	Potential Site. Site survey 2006 only limited amount of habitat.
Napton Quarry	SP457613	N/A	2006	P3	Potential Site. Site survey 2006 sufficient habitat for small colony.
Southam Quarry Old Site	SP419644	N/a	2006	P3	Survey 2005 found only limited habitat potential site.
Southam Quarry Extension	SP428637	N/A	2006	P3	New active quarry Survey 2005 found that no habitat exists yet potential site.
M 40 slip road	SP371552	N/A	N/A	P3	Highways agency has planted Kidney Vetch.
Gaydon Landfill	SP376551	N/A	2005	P3	Potential site.

Princethorpe Woodlands

Dingy Skipper -

2009	2008	2007	2006	2005	P1	P2	P3	Total Extinct	Pre 1990	1990-2000	2000-2005
		1					11	1	1	0	0

Change - Colonies at Ryton and Draycote not confirmed during Millennium Atlas Survey (Vagrant sightings?). One colony now confirmed at Ryton Wood Meadows. Old quarry sites at Ryton Country Park and Smith's Concrete and Draycote have the greatest potential for colonisation. Bubbenhall Meadows, Pagets Pool, Old Peugeot site and Tythe Farm Cutting all priorities for survey.

Site Name	Grid Ref.	Year	Last Visit	Size	Comment
Ryton Wood Meadows	SP376725	2007	2007	C	Slight increase in colony size. Potential for very large colony. Further seeding and plug planting carried out in 2007.
Ryton Wood	SP380725	1990' s V	2007	P3 V	Sightings probable vagrants. No suitable habitat exists. Change in mowing and creation of centre of wood coppice could create habitat.
Draycote Embankment /Draycote Meadows	SP447706	1990' s V	2006	P3 V	Some habitat needs surveying. Sightings at Draycote Meadows believed vagrants.
Bubbenhall Wood Meadows	SP374717	N/A	2007	P3	Survey 2005 of old sand quarry found limited habitat potential site for large colony site seeded in 2008 with BFT.
Pagets Pool	SP374721	N/A	2006	P3	Survey 2004 found site scrubbed up, 2006 & 07 small part of site cleared. Potential site.
Land near Ryton Village Old Peugeot site	SP384736	N/A		P3	Potential site needs surveying.
Ryton Country Park	SP374725	N/A	2007	P3	Survey in 2006 located small amount of habitat.
Tithe Farm Cutting	SP401677	N/A	2006	P3	Survey in 2006 located small amount of habitat.
Draycote Water Farnborough Dam Area	SP468694	N/A	2006	P3	Potential site needs habitat survey.
Draycote Water South Hensborough Bank	SP458689	N/A	2006	P3	Potential site needs habitat survey.
Draycote Water Nr Water Treatment	SP452698	N/A	2006	P3	Potential site needs habitat survey.
Weston/Waverley Woods	SP354706	N/A	2007	P3	Survey in 2006 located small amount of habitat.
Wappenbury Wood	SP375710	1955	2005	X	Grassland no longer suitable.

South Western Grasslands

Dingy Skipper -

2009	2008	2007	2006	2005	P1	P2	P3	Total Extinct	Pre 1990	1990-2000	2000-2005
						1 (1 X)	3 (2X)	9	6	2	1

Change - Whole meta-population may be extinct. Hampton Wood area and Snitterfield Glider club area need surveying. The status of the Dingy Skipper seen near Hampton Wood in 2005 is unclear.

Site Name	Grid Ref.	Year	Last Visit	Size	Comment
Snitterfield Bushes/Gilding Club	SP198604	2004	2007	P2 X	Is the colony based outside the wood? Wood does not appear suitable.
Wilmcote Rough Copmill Hill	SP152578	1997	2006	P3 X	Site recently managed and appears suitable. Colony may have survived.
Oversley Wood	SP111564	1999	2007	P3 X	Trees have now grown to shade original breeding areas. Small colony may still exist.
Grove Hill	SP119557	N/A	2006	P3	Potential site.
Wilmcote/Newham Quarry	SP152593	1980	2006	X	Survey in 2006 found insufficient habitat site scrubbing up.
Bearley Old Railway	SP173607	198?	1990's	X	Most of site lost to housing.
Hatton Area	SP2066	198?	1990's	X	Is this an old site? Believed site lost to housing.
Haseley Canal Bank/Hoton House Farm	SP2266	198?	1990's	X	Is this an old site?
Shrewley Canal Bank	SP21669	198?	1990's	X	Is this an old site?
Tattle Bank	SP1862	198?		X	Believed lost due to scrub encroachment.
Hampton Wood set aside	SP258598	2005 V	2007	V	First and only record for this site. Exact status not known.

Long Marston Honeybourne Complex

Dingy Skipper -

2009	2008	2007	2006	2005	P1	P2	P3	Total Extinct	Pre 1990	1990-2000	2000-2005
							4 (1X)	2	2	0	0

Entire meta-population may be extinct. Site resurveying for species only located minimal suitable habitat.

Site Name	Grid Ref.	Year	Last Visit	Size	Comment
The Greenway Industrial Estate	SP155475	N/A	2006	P3	Potential site. Survey 2006 located suitable habitat.
Long Marston Airfield	SP171490	N/A	2006	P3	Potential site. Needs surveying.
Long Marston Army Camp Meadow	SP158475	N/A	2006	P3	Under threat of development. Potential site.
Binton Verge	SP141532	1998	2006	X	Checked every year since 1998 and believed extinct.
The Greenway Long Marston	SP156481	1990's?	2006	P3 X	Potential site. Survey 2006 located small areas of suitable habitat.

Kineton Lias Grasslands

Dingy Skipper -

2009	2008	2007	2006	2005	P1	P2	P3	Total Extinct	Pre 1990	1990-2000	2000-2005
			11	1	1	3 (3X)	5 (4 X)	7	4	3	0

Change - This is the strongest meta population. There have been 3 recent colonisations, Falcon Firs, Telegraph Wood and the Heritage Motor Museum. Three sites within the Kineton Army base, Gaydon motor site and the Ettington area need more surveying.

Site Name	Grid Ref.	Year	Last Visit	Size	Comment
BAD Kineton Lower Oaks	SP348487	2006	2006	C	Habitat fairly stable.
BAD Kineton Fleabane	SP367505	2006	2006	B/C	Some inappropriate tree planting is reducing habitat size.
Lighthorn Corner Heath	SP343565	2006	2006	B	Colony appears stable. Area cattle grazed.
BAD Kineton Lake Area	SP369514	2006	2006	B	Site confirmed in 2006 probable recent colonisation.
Ettington Cutting	SP265485	2006	2006	B	Stable colony on well managed site.
BAD Kineton Back Gate Crossing	SP359505	2006	2006	B	New medium sized colony located probable has existed for some time.
Coombe Farm Embankment/ Goldicote Cutting	SP235511	2006	2006	B	Site reasonably stable. Inappropriate tree planting is threatening colony.
BAD Kineton Graveground Coppice	SP355494	2006	2006	A/B	Stable colony.
BAD Kineton Boundary Farm Pond	SP355512	2006	2006	A/B	Stable colony but future scrubbing will need to be monitored.
BAD Kineton Falcon Firs	SP366500	2006	2006	A	New small colony located marginal site.
BAD Kineton Telegraph Wood	SP366490	2006	2006	A	New small colony located marginal site.
Heritage Motor Museum	SP358545	2005	2005	A	May be satellite colony of Gaydon site marginal site.
BAD Kineton Marshalling Yard	SP364517	N/A	2006	P1	Site surveyed in poor weather very likely colony exists.
BAD Kineton Lab 12 area	SP375513	N/A	1990's	P1	Potential site needs re-surveying.
BAD Kineton Demo Ground	SP380450	N/A	2004	P1	Potential site needs re-surveying.
Rover Gaydon	SP356553	1990's	1990's	P2 X	Believed colony still exists. Site needs re-surveying.
Ettington Grove	SP356487	1988	1990's	P2 X	Needs re-surveying.
Ettington Park	SP2648	1986	1990's	P2 X	Needs re-surveying.
Fenny Compton Tunnels	SP438523	1990's	2006	P3 X	May still exist. Needs re-surveying. Recent clearance work has improved site.

Hell Hole	SP306536	N/A	2006	P3	Potential site. Survey 2005 found insufficient habitat restored landfill site.
Back Rd Quarry	SP327559	1994	2005	P3 X	Site recovering after heavy grazing potential for recolonisation.
Oxhouse Farm Meadow	SP304508	1970's?	2006	P3 X	Site scrubbed and not grazed.
Oxhouse Farm Railway Line	SP305508	1970's	2006	P3 X	Railway line totally scrubbed and enriched

Coventry Sites

Dingy Skipper -

2009	2008	2007	2006	2005	P1	P2	P3	Total Extinct	Pre 1990	1990-2000	2000-2005
								3	3	0	0

No Change

Site Name	Grid Ref.	Year	Last Visit	Size	Comment
Clowes Wood	SP101 741	1946	2006	X	Habitat no longer suitable. Insufficient management.
Tile Hill Wood	SP278 789	1940's	2006	X	Habitat no longer suitable. No suitable management.
Canley Holt	SP308 780	1950's		X	Site developed.

Grizzled Skipper - *Pyrgus malvae*

Colony History

2009	2008	2007	2006	2005	P1	P2	P3	Total Extinct	Pre 1990	1990-2000	2000-2005
		12	24	4	4		8	48	18	22	8

Meta-Population History

Total Known Pre 1990	Total Known Pre 2000	Total Known Pre 2005	Extant
7	7	7	7

Action	Target	Progress	Comment
Increase/confirm 40 colonies by 2009.	40 Extant colonies.	38 colonies confirmed.	Increase colonies by 2.
Between 2006 & 2009 resurvey all known and potential sites for the Grizzled Skipper.	Survey 74 sites.	71 sites surveyed.	Survey 3 more sites.
Increase to 10 colonies monitored by 2009.	Monitor 10 colonies.	9 colonies monitored.	Increase monitored colonies by 1.

Rugby Meta-population

Grizzled Skipper -

2009	2008	2007	2006	2005	P1	P2	P3	Total Extinct	Pre 1990	1990-2000	2000-2005
		1			1		3	5	3	2	0

Change - Following many years of decline there is now a good chance that several new colonies can be established in the Rugby area thanks to habitat creation as a consequence of the building of the Western relief road. There is a proposal to introduce the Grizzled Skipper to Newbold Quarry.

Site Name	Grid Ref.	Year	Last Visit	Size	Comment
Malpass Quarry	SP489759	2007	2007	B	CEMEX Site Stable thanks to ongoing management PJP (colony at risk if/when site is developed).
Newbold Quarry	SP494768	N/A	1990's	P1	WWT reserve Vacant habitat. PJP believes existed prior to 1990. Needs egg search survey.
Western relief Rd nr Parkfield Road	SP489763?	N/A	2008	P3	Potential habitat area being created.

Compensation area Nr Cawston	SP464734?	N/A	2008	P3	Potential habitat area being created.
New Bilton Quarry	SP494759	N/A	?	P3	CEMEX Site Vacant habitat. Needs egg search survey.
GEC Rugby	SP508765	1997	1997	X	St Modwen Site now developed. No longer exists.
Hillmorton Ballast Pits	SP544737	1994	?	X	Private Site is now engineering yard & store for rail modernisation.
All Oaks Wood	SP446785	1970's	?	X	Private site No open areas present.
Easenhall Cutting	SP445795	1970's	?	X	Cutting scrubbed up no open areas.
Willey Cutting	SP498846	1964	?	X	Cutting scrubbed up no open areas.

Great Central Railway Line Meta-population

Grizzled Skipper -

2009	2008	2007	2006	2005	P1	P2	P3	Total Extinct	Pre 1990	1990-2000	2000-2005
		1	1			1 (1X)	1	4	0	2	2

Change - Three colonies appear to have become extinct. Whole meta-population under threat of extinction. Wolfhampcote, Flecknoe and Newbold Ground need resurveying. The proposed reopening of this railway could save this meta-population.

Site Name	Grid Ref.	Year	Last Visit	Size	Comment
Wolfhampcote Cutting Embankment	SP524645	2007	2007	C	Colonize size increasing. Under threat new owner may not support conservation measures.
Flecknoe Embankment	SP520624	2006	2006	B	Colony size reduced some habitat has been lost to farm land and scrub encroachment.
Newbolds Grounds Cutting (Northamptonshire)	SP520608	2004	2006	P2	Colony at risk from shrub encroachment May be extinct.
Willoughby Viaduct South	SP524656	N/A	2006	P3	2006 found some habitat potential for small colony. Needs resurvey.
Navigation Cutting	SP524686	2000	2006	X	2006 survey found no substantial open area habitat now unsuitable.
Braunston Embankment (Northamptonshire)	SP537656	1997	2004	X	Survey 2004 found habitat scrubbed up and unsuitable.
Shuckborough Embankment	SP519615	1996	2005	X	Habitat more rank. Survey 2005 found habitat unsuitable.

Southam Lias Grasslands

Grizzled Skipper -

2009	2008	2007	2006	2005	P1	P2	P3	Total Extinct	Pre 1990	1990-2000	2000-2005
		3	6	2		2 (2 X)	1	5	1	3	1

Change - One colony appears to have been rediscovered and one appears to have become extinct. One new site discovered. Bishops Bowl, Stockton Cutting, Nelsons Quarry, Ufton Hill Farm and Napton Quarry are priorities for resurvey.

Site Name	Grid Ref.	Year	Last Visit	Size	Comment
Southam Quarry	SP421635	2007	2007	C	Active Quarry colony stable. Large area of site needs to be capped which will reduce colony size.
Harbury Spoilbank South	SP386598	2007	2007	C	Recent clearance has assisted population.
Harbury Spoilbank North	SP385602	2006	2006	B/C	Recent clearance has assisted population.
Ufton Fields Man Orchid Area	SP385617	2006	2006	B	Site not actively managed. Colony in sheep field appears stable.
Bishops Bowl Sports	SP384589	2006	2006	B	SSSI managed by rabbit grazing. Survey 2006 found several breeding areas. Site under threat of development.
Bishops Itchington/Hill/Heap	SP392584	2007	2007	B	Stable but site under threat of development.
Bishops Bowl Blue Lagoon	SP390587	2006	2006	A	Site heavily scrubbed. Colony very vulnerable to scrub increase and development.
Southam Quarry old site	SP419644	2006	2006	A	Site in danger of scrubbing up.
Stockton Quarry	SP439649	2006	2006	A	Emergency management work carried out 2005 & 2006. Large scale clearance undertaken in 2008.
Bishops Bowl Fishing	SP385589	2005	2006	A/B	Recent clearance has assisted population. Survey 2006 didn't locate butterfly needs resurvey. Site under threat of development.
Nelsons Quarry	SP445643	2005	2007	A	Stable. None found in 2006 & 2007 needs resurvey. Most of site lost to scrub.
Napton Quarry	SP457613	2004	2006	P2 X	Reappearance, reported as extinct 1997. None found in 2006 needs resurvey. Habitat looks very good.
Ufton Hill Farm	SP392614	1998	2006	P2 X	Site lost when grasslands improved. Part of area then became landfill Survey in 2005 of restored landfill area found site suitable for small

					colony. Record located for 1998 states species still present needs resurvey.
Southam Quarry extension	SP428637	N/A	2006	P3	Survey 2006 found some habitat. Needs resurvey.
Windmill Hill Ladbrook	SP424593	1998	2006	X	Site lost now rank grassland enriched from surrounding farmland also has suffered scrub encroachment.
Napton Reservoir	SP467634	1996	2006	X	Survey in 2006 found Colony lost since grasslands not managed.
Fosse Verge	SP344604	1983	1990's	X	No habitat now exists.

Princethorpe Woodlands

Grizzled Skipper -

2009	2008	2007	2006	2005	P1	P2	P3	Total Extinct	Pre 1990	1990-2000	2000-2005
		2		1	4 (3X)	1 (1X)	2 (2X)	6	2	2	2

Change -Three colonies appear to have become established and two appear to have become extinct recently. Draycote Water, Draycote Embankment, Pagets Pool and Tithe Farm Embankment are priorities for resurvey.

Site Name	Grid Ref.	Year	Last Visit	Size	Comment
Draycote Water Farnborough Dam Area	SP468694	2007	2007	B/C	Local management agreement (Parr, 2004). Colony appears stable
Ryton Wood Meadows	SP376725	2007	2007	B	Slight increase in colony size. New areas of site now suitable for colonisation following habitat creation.
Draycote Water Nr water treatment	SP452698	2005	2006	B	Local management agreement PJP. Needs egg search
Ryton Wood	SP381725	2003	2007	P1 X	Sightings may be vagrants or a result of temporary colonisation. Two eggs have been found.
Draycote Water South Hensborough Bank	SP466698	N/A	2005	P1	Survey 2004 found vacant habitat. Needs resurveying. Local management agreement PJP.
Pagets Pool	SP374721	1996	2006	P1 X	Potential Site Scrub clearance occurred in 2006/07. High probability for re-colonisation.
Draycote Embankment	SP447706	1994	2006	P1 X	Some habitat present needs resurveying. Potential site.
Tithe Farm Embankment	SP407677	2004	2006	P2 X	Habitat appears stable. Colony thought extinct in 1997. Needs resurvey.

Wappenbury Wood	SP375710	1997?	2005	P3 X	Appears extinct since grasslands not managed. New coppice area need re-survey
Weston/Waverley Woods	SP354706	1970's	2007	P3 X	Potential Site. Survey 2006 found habitat restored. Meeting held with FE

South Western Grasslands

Grizzled Skipper -

2009	2008	2007	2006	2005	P1	P2	P3	Total Extinct	Pre 1990	1990-2000	2000-2005
		1	3		1	2 (2X)		6	3	2	1

Snitterfield Bushes, Oversley and Grove Woods are priorities for resurvey

Site Name	Grid Ref.	Year	Last Visit	Size	Comment
Snitterfield Bushes South and glidder club	SP198601	2006	2006	C	Colony centred on airfield only temporary colonises wood.
Snitterfield Bushes North Clearing	SP202606	2007	2007	B	Site stable maintained by rabbit grazing and clearance.
Wilmcote/Newham Quarry	SP151594	2006	2006	B	Slow scrub encroachment has fragmented colony into two areas. Colony under threat.
Wilmcote Rough Copmill Hill	SP152577	2006	2006	B	Colony increased following scrub clearance. Size should increase.
Snitterfield Bushes North Coppice	SP519615	N/A	2006	P1	Recent clearance has given this area high probability of being colonised needs resurvey.
Oversley Wood	SP114564	2001	2006	P2 X	Small colony may still exist. 2006 survey failed to find butterfly Needs resurvey. Management arranged following meeting with FE.
Grove Hill	SP119557	1999?	2006	P2 X	Survey 2006 found habitat for small colony, may still exist.
Withycombe Wood	SP144576	1993	2006	X	Site lost when grassland replanted.
Bearley Old Railway	SP173607	1980's		X	Most of site lost to housing.
Hatton Area	SP2066	1980's		X	Believed site lost to housing.
Tattle Bank	SP1862	1972		X	Believed lost due to scrub encroachment.

Long Marston / Honeybourne Complex

Grizzled Skipper -

2009	2008	2007	2006	2005	P1	P2	P3	Total Extinct	Pre 1990	1990-2000	2000-2005
		4	1				4 (3X)	4	1	3	0

Five colonies are believed to still be in existence. Further habitat creation is being carried out at Long Marston ex army base. Long Marston and the Green Way are priorities for resurvey.

Site Name	Grid Ref.	Year	Last Visit	Size	Comment
The Greenway Industrial Estate	SP152473	2006	2006	B/C	Meeting with St Modwen in 2006/07 should secure and enhance site
Long Marston Pond/Meadow	SP163473	2007	2007	B	Meeting with St Modwen in 2006/07 should secure and enhance site
Long Marston Storage	SP157479	2007	2007	B	Meeting with St Modwen in 2006/07 should secure and enhance site
Long Marston Sidings	SP157467	2007	2006	A	Meeting with St Modwen in 2006/07 should secure and enhance site
Long Marston Centre Roads	SP163477	2007	2007	A	Meeting with St Modwen in 2006/07 should secure and enhance site. This area has been newly colonised.
Long Marston Airfield	SP171490	N/A		P3	Potential Site Needs surveying.
The Greenway Long Marston	SP156481	1998	2006	P3 X	Under threat, habitat heavily used. Survey 2006 found sparse habitat, colony may still exist.
The Greenway Near Airfield	SP157495	1998	2006 in part	P3 X	Under threat, habitat heavily used. Survey 2005 found sparse habitat, colony may still exist.
The Greenway	SP156481	1996	2006 in part	P3 X	Under threat, habitat heavily used. Survey 2005 found sparse habitat, colony may still exist.
Binton Verge	SP141532	1980's		X	Not seen despite surveying.

Kineton Lias Grasslands

Grizzled Skipper -

2009	2008	2007	2006	2005	P1	P2	P3	Total Extinct	Pre 1990	1990-2000	2000-2005
			13	1	1	6 (6 X)	3(1 X)	12	2	8	2

14 colonies confirmed since 2005. There are likely to be more colonies to be discovered. Target area at Kineton Army base, Oxhouse Farm, 2 sites at Gaydon, Ettington Grove and Hell Hole are priorities for resurvey.

Site Name	Grid Ref.	Year	Last Visit	Size	Comment
BAD Kineton Lower Oaks	SP349488	2006	2006	C	Site stable.
BAD Kineton Fleabane	SP367505	2006	2006	C	Site mostly stable. Inappropriate tree planting will reduce area.
BAD Kineton Marshalling Yard/Stabbling Area	SP365518	2006	2006	B/C	Site large but in danger of scrub encroachment.
Lighthorn Heath	SP343565	2006	2006	B	Stable. Cattle grazed farmland.
BAD Kineton Falcon Firs	SP367500	2006	2006	B	Discovered 2006 probably small colony existed for a number of years.
BAD Kineton Grace Ground/Edge Hill Coppice	SP356494	2006	2006	B	Site Stable.
BAD Kineton Pheasantries	SP361450	2006	2006	B	Site Stable.
Fenny Compton Tunnels	SP437523	2006	2006	B	Site has benefited from recent management.
BAD Kineton Lake Boating Area	SP370515	2006	2006	A/B	2006 survey confirmed habitat suitable for small colony.
BAD Kineton Back Gate	SP360506	2006	2006	A	Discovered 2006 probably existed for a number of years.
BAD Kineton Boundary Farm	SP359513	2006	2006	A	2006 survey confirmed habitat suitable for small colony.
Coombe Farm Embankment	SP235510	2006	2006	A	Site reasonable stable. Inappropriate tree planting threatens area.
Ettington Cutting	SP265485	2006	2006	A	Rediscovered Site. Well managed stable colony.
Heritage Motor Museum	SP358545	2005	2005	A	May be satellite colony of Gaydon Site. Needs resurvey.
BAD Kineton Marshalling Yard	SP373520	N/A	2006	P1	Likely new site surveyed in poor weather. Needs resurvey.
Oxhouse Farm Meadow	SP304508	2002	2006	P2 X	Reported nearby SP294511. Needs surveying. Large site may

					still exist.
Rover Gaydon	SP356553	1998	1998	P2 X	Needs resurveying. Still believed to exist.
BAD Kineton Lab 12 area	SP375513	1998	1998	P2 X	Needs resurveying. Should still exist.
BAD Kineton Demo Ground	SP380450	2004	2004	P2 X	Needs resurveying. Should still exist.
Ettington Grove	SP356512	1997	1997	P2 X	Needs resurveying.
BAD Kineton Sewage Farm/Owlings Pond	SP360511	1998	2005	P2 X	2005 survey found habitat suitable for small colony. Needs resurvey.
Gaydon Landfill	SP370551	N/A	2006	P3	Potential site no habitat located needs resurveying.
BAD Kineton Telegraph Wood	SP367491	N/A	2006	P3	2006 survey found area suitable for small colony.
Hell Hole	SP306540	1998	2006	P3 X	Habitat lost during restoration. 2006 survey only found small amount of habitat recovering needs resurvey. Report Grizzled Skipper seen nearby in 2007.
Back Rd Quarry	SP327559	1996	2006	P3 X	Survey in 2006 only found limited habitat recovering needs resurvey.
Chesterton Wood	SP342341	1993	2006	P3 X	2006 survey only found minimal habitat present.
Horton Edgehill Quarry	SP368465	1992	2004	X	Survey 2004 found habitat lost due to quarrying.
Oxhouse Farm Cutting	SP305508	1986?	2006	X	Railway line totally scrubbed.
Burton Dasset Hills	SP395520	1970's	2004	X	Survey 2004 found site heavily sheep grazed. Grassland appeared improved.

Isolated Sites

Grizzled Skipper -

2009	2008	2007	2006	2005	P1	P2	P3	P4	Total Extinct	Pre 1990	1990-2000	2000-2005
									6	6	0	0

No Change

Site Name	Grid Ref.	Year	Last Visit	Size	Comment
Wainbody Wood	SP313749	1950's	2005	X	Habitat no longer suitable. A fire on railway line may have caused final extinction.
Wolford Wood Old Covert	SP246333	1949's	2005	X	Return of active management has made the woods habitat suitable again.

Tysoe	SP34 42?	1949	2005	X	Exact location of colony unknown. No suitable habitat found.
Clowes Wood	SP101 741	1946	2006	X	Habitat no longer suitable, insufficient management.
Hope Farm Upton House	SP366 455	1940's	2005	X	Needs resurvey.
Tile Hill Wood	SP278 789	1931	2005	X	Habitat no longer suitable. No suitable management.

Wood White - *Leptidea sinapis*

Colony History

2009	2008	2007	2006	2005	P1	P2	P3	Total Extinct	Pre 1990	1990-2000	2000-2005
		2					5	15	12	3	0

Meta-Population History

Total Known Pre 1990	Total Known Pre 2000	Total Known Pre 2005	Extant
2	3	2	2

Action	Target	Progress	Comment
Maintain/confirm 2 colonies by 2009.	2 Extant colonies.	2 colonies confirmed.	Maintain both extant colonies.
Between 2006 & 2009 resurvey all known and potential sites for the Wood White.	Survey 10 sites.	10 sites surveyed.	Continue to monitor potential new sites.
Increase to 2 colonies monitored by 2009.	Monitor 2 colonies.	1 site monitored.	Recommence monitoring at Wolford Wood.

The Greater Princethorpe Wood Complex

Wood White -

2009	2008	2007	2006	2005	P1	P2	P3	Total Extinct	Pre 1990	1990-2000	2000-2005
		1			1 (1 X)		3 (1 X)	3	3	0	0

Occasional sightings of the Wood White at Ryton Wood during 1990's were not classified as a colony; however, it is now thought that a very small colony existed in 1997. Since 2005 there has been a crash in numbers at Ryton Wood.

Site Name	Grid Ref.	Year	Last Visit	Size	Comment
Ryton Wood	SP381725	2007	2007	A	Following 4 years of increasing the Wood White had a very poor year despite targeted management. Change in management carried out to assist this species.
Weston/Waverley Wood	SP354706	1950	2007	P1 X	Vacant habitat. Survey in 2006 found sufficient habitat to sustain a small colony.
Bubbenhall Wood	SP368717	N/A	2007	P3	Potential habitat. Survey in 2005 found habitat with

					structure but insufficient larval foodplant to sustain a colony.
Bull and Butcher Wood	SP399718	N/A	2006	P3	Potential habitat. Survey in 2006 found sufficient larval foodplant but current mowing regime may prevent permanent colony becoming established.
Brandon Wood	SP394767	1989	2005	P3 X	Vacant habitat. Survey in 2005 found wood structure and sufficient larval foodplant to support a small colony.
Wappenbury Wood	SP375710	1942	2007	X	Potential colony site. Survey in 2005 confirmed that if wood is more actively managed small colony could become established.

Wolford Wood Complex

Wood White -

2009	2008	2007	2006	2005	P1	P2	P3	Total Extinct	Pre 1990	1990-2000	2000-2005
		1					3	0	0	0	0

The colony at Wolford Wood was discovered during surveying for the Millennium Atlas in 1997. It is thought it became established in the 1970s.

Site Name	Grid Ref.	Year	Last Visit	Size	Comment
Wolford Wood	SP237335	2007	2007	C	Medium to large colony. Numbers have reduced in recent years.
Bourton Wood Gloucestershire	SP161334	N/A	2005	P3	Vacant habitat. Survey in 2004 found sufficient habitat to support small colony.
Ash Hale Wood Gloucestershire	SP210345	N/A	2005	P3	Vacant habitat. Survey in 2004 found sufficient habitat to support small colony.
Dunsden Coppice Gloucestershire	SP228348	N/A	2005	P3	Vacant habitat. Survey in 2004 found sufficient habitat to support small colony.

12 Historical Colonies

Wood White -

Site Name	Grid Ref.	Year	Size	Comment
Stockton Cutting	SP439 649	1992	X	Some habitat remains.
Nelsons Quarry	SP445 643	1992	X	Insufficient habitat.
Ufton Fields	SP383 615	1991	X	Some habitat remains.
Hay Wood	SP210 714	1989	X	Insufficient habitat.
Harbury Spoilbank North	SP385 602	1982	X	Insufficient habitat.
Harbury Spoilbank South	SP386 598	1982	X	Insufficient habitat.
Fenny Compton Tunnel	SP438 523	1980	X	Insufficient habitat.
Snowford Cutting	SP383 665	1976	X	Some habitat remains.
Flecknoe Embankment	SP520 624	1975	X	Insufficient habitat.
Snitterfield Bushes	SP199 604	1971	X	Some habitat remains.
Ufton Wood	SP388 628	1969	X	Some habitat remains.
Binley Wood	SP389 776	1944	X	Insufficient habitat.

Green Hairstreak *Callophrys rubi*

Colony History

2009	2008	2007	2006	2005	P1	P2	P3	Total Extinct	Pre 1990	1990-2000	2000-2005
		8	5	1	3		6	26	10	12	4

Meta-Population History

Total Known Pre 1990	Total Known Pre 2000	Total Known Pre 2005	Extant
6	4	4	4

Action	Target	Progress	Comment
Increase/confirm 17 colonies by 2009.	17 Extant colonies.	14 colonies confirmed.	Need to increase by 3 colonies.
Between 2006 & 2009 resurvey all known and potential sites for the Green Hairstreak.	Survey 28 sites.	25 sites surveyed.	3 sites to survey.
Increase to X colonies monitored by 2009.	Monitor 7 colonies.	7 colonies monitored.	Maintain no of colonies monitored.

Sutton Park Meta-population

Green Hairstreak -

2009	2008	2007	2006	2005	P1	P2	P3	Total Extinct	Pre 1990	1990-2000	2000-2005
		1	2	1	2 (1X)			1	0	1	0

Change - No change. Two definite core breeding sites identified. More survey work needed to determine if other sightings are from separate breeding areas. Bracebridge Pool and Boldmere are priority areas for survey.

Site Name	Grid Ref.	Year	Last Visit	Size	Comment
Boldmere Area	SP10 94	1999	1999	P1 X	Vagrant or breeding area more survey work required
Transect Area	SP1096	2007	2007	C	Contains 2 breeding areas
Bracebridge Pool Area	SP1098	N/A	?	P1	Requires surveying
Longmore Valley Area	SP0894	2005	2005	A	Vagrant or breeding area more survey work required
Golf Course Area	SP0896	2006	2006	A	Vagrant or breeding area more survey work required
Streetly Area	SP0898	2006	2006	A	Vagrant or breeding area more survey work required

Great Central Railway Meta-population

Green Hairstreak -

2009	2008	2007	2006	2005	P1	P2	P3	Total Extinct	Pre 1990	1990-2000	2000-2005
		2				2 (2 X)	2	7	1	5	1

Change - Rainsbrook Embankment and Ashlawn Cutting need resurveying.

Site Name	Grid Ref.	Year	Last Year	Size	Comment
Wolfhamcote Cutting	SP525645	2007	2007	B/C	Large stable colony. Under threat due to ownership change.
Malpass Quarry	SP489759	2007	2007	B	Stable but under treat of development.
Rainsbrook Embankment	SP516719	1997	2004	P2 X	Colony needs intensive survey may possibly still exists.
Western relief Rd nr Parkfield Road	SP489763?	N/A	2008	P3	Potential habitat area being created.
Compensation area Nr Cawston	SP464734?	N/A	2008	P3	Potential habitat area being created.
Ashlawn Cutting	SP516727	1996?	2007	P2 X	Vacant habitat. It is possible that colony may exist.
Easenhall Cutting	SP455795	1953	1990's	X	Site scrubbed up and unsuitable.
Navigation Cutting	SP524686	2004	2006	X	Colony extinct grassland now largely rank site very scrubbed.
Braunston Cutting (Northamptonshire)	SP537656	1997	1990's	X	Site scrubbed up. Habitat no longer exists.
Hillmorton Balast Pits	SP544737	1993	1990's	X	Site developed. Breeding area appears to be gone.
Flecknoe Embankment	SP520624	1992	2006	X	Since scrub removed there have been no further sightings. Habitat gone.

Princethorpe Woodlands Meta-population

Green Hairstreak -

2009	2008	2007	2006	2005	P1	P2	P3	Total Extinct	Pre 1990	1990-2000	2000-2005
		2			1		2 (2 X)	4	4	0	0

Change - Ryton Country Park and Pagets Pool are priorities for resurvey.

Site Name	Grid Re.	Year	Last Visit	Size	Comment
Ryton Wood Meadows	SP376727	2007	2007	D	Colony appears to be increasing following further seeding and planting of BFT & GBT.
Ryton Country Park	SP374725	2007	2007	B	Butterflies seen in 2007 requires further surveying to confirm breeding.
Bubbenhall Wood	SP366717	1970	2007	P3 X	Despite searches no colony located. With restoration potential future site. Site seeded 2008 with BFT.
Pagets Pool	SP374721	N/A	2006	P1	Potential Site Scrub clearance occurred in 2006/07. High probability for re-colonisation.
Ryton Wood	SP381725	1940's	2007	P3 X	Vagrant butterflies seen in 2005. Survey found large areas of suitable habitat.
Brandon Marsh	SP385755	1980's	2007	X	Not seen recently.
Stoneleigh	SP325715	1950's		X	Site developed.

Central Lias Grasslands and Railway Lines Meta-population

Green Hairstreak -

2009	2008	2007	2006	2005	P1	P2	P3	Total Extinct	Pre 1990	1990-2000	2000-2005
		3	3		4 (3X)		2	3	0	0	3

Change - Bishops Bowl area, Snowford Cutting, Nelsons Quarry and Ufton Fields require resurveying.

Site Name	Grid Ref.	Year	Last Visit	Size	Comment
Bishops Itchington Hill/Heap	SP392584	2007	2007	B/C	Under threat of development. Survey 2004 found large area of suitable habitat.
Harbury Spoilbank South	SP386598	2007	2007	B	Colony reduced in size as a result of scrub management to benefit other species, survey 2005 still located several areas of habitat.
Stockton Cutting	SP439649	2006	2007	B	Colony appears stable. Survey 2005 found small areas of habitat. In 2008 large area of site cleared and seeded with GBT.
Nelsons Quarry	SP445643	2006	2007	A	Small colony confirmed in 2006. Site largely scrubbed up.
Harbury Spolibank North	SP385602	2006	2006	A	Small colony confirmed in 2006.
Southam Quarry	SP421634	2007	2007	A	Active Quarry area . No

					access. Large areas of habitat.
Bishops Bowl Sports	SP384589	N/A	2006	P1	Vacant habitat. Survey in 2005 found large areas of habitat. Site under threat.
Snowford Cutting	SP383665	2004	2006	P1 X	Colony rediscovered in 2004. Survey 2004 located small areas of habitat.
Ufton Fields	SP383615	2003	2007	P1 X	Colony may still exist survey 2005 found suitable habitat.
Bishops Bowl Fishing	SP388586	2003	2006	P1 X	Habitat improving. Up for sale survey 2005 found areas of suitable habitat. Site under threat.
Calcutt Cutting	SP465641	N/A		P3	No habitat at present but potential site.
Southam Quarry Extension	SP428637	N/A	2006	P3	Potential Site Active quarry survey 2005 found no habitat yet.

Southern Lias Grasslands and Railways Meta-population

Green Hairstreak -

2009	2008	2007	2006	2005	P1	P2	P3	Total Extinct	Pre 1990	1990-2000	2000-2005
							3 (1 X)	4	2	2	0

Change - Possible that all colonies now extinct.

Site Name	Grid Ref.	Year	Last Visit	Size	Comment
Wormleighton Cutting	SP446515	N/A	1990's	P3	Potential site. Survey 2004 found only small amount of habitat.
Coombe Farm Embankment	SP235510	N/A	2006	P3	Several recent surveys have not located butterfly. Small amount of habitat still exists.
Kineton BAD	SP3448	1997	2006	X	Survey 2005 found only known area for butterfly scrubbed up. Small chance colony may still exist.
Oxhouse Farm	SP305508	1968	2006	X	Survey 2004 found some habitat in first meadow. Small chance colony may exist.
The Tunnels Fenny Compton	SP438523	1990's	2006	P3 X	Area scrubbing up but colony may still exist.
Edge Hill	SP368465	Pre 1904	1990's	X	Quarrying extensive. Survey 2004 found no habitat.

Western Grasslands Meta-population

Green Hairstreak -

2009	2008	2007	2006	2005	P1	P2	P3	Total Extinct	Pre 1990	1990-2000	2000-2005
								6	3	3	0

Change - No change. All colonies probably extinct.

Site Name	Grid Ref.	Year	Last Year	Size	Comment
Shrewley Cutting	SP216669	1990		X	Unlikely colony exists.
Haseley Canal Bank	SP2266	1990		X	Unlikely colony exists.
Hampton Magna	SP2464	1990		X	Unlikely colony exists.
Wilmcote Rough	SP152578	1973	2006	X	Unlikely colony exists.
Tattle Bank	SP1862	1923		X	Habitat believed gone.
Yarningdale Common	SP195664	1920's		X	Habitat believed gone.

Isolated Site

Green Hairstreak -

2009	2008	2007	2006	2005	P1	P2	P3	P4	Extinct
									1

Change - Extensive surveying has only ever located one butterfly.

Site Name	Grid Ref.	Year	Size	Comment
Baddesley Ensor	SP274976	1998	X	Only seen for one year. Probably extinct and may never have been a colony. Suitable habitat exists.

Brown Hairstreak *Thecla betulae*

Colony History

2009	2008	2007	2006	2005	P1	P2	P3	Total Extinct	Pre 1990	1990-2000	2000-2005
						2			5		

Meta-Population History

Total Known Pre 1990	Total Known Pre 2000	Total Known Pre 2005	Extant
			P2

Action	Target	Progress	Comment
Increase/confirm 2 colonies by 2009.	2 Extant colonies.	No colonies confirmed.	Increase colonies by 2.
Between 2006 & 2009 resurvey all known and potential sites for the Brown Hairstreak.	Survey 2 areas.	2 areas surveyed.	Establish to monitoring regimes.
Increase to 2 colonies monitored by egg search 2009.	Monitor 2 colonies.	No area monitored regularly.	

Both Princethorpe and Salford Priors areas require further surveying

Historical Colonies

Site Name	Grid Ref.	Year	Last Visit	Size	Comment
Wolford Wood	SP	Pre 1904		X	Unconfirmed colony.
Warwick Castle	SP2864 SP2862	1969-1971 X		X	Colony believed destroyed by large scale blackthorn removal.
Austy Wood	SP1662	1971 X		X	Colony believed destroyed by intensive winter mechanical hedgerow management.
Broadwell	SP4464	1970 X		X	Colony believed destroyed by intensive winter mechanical hedgerow management.
Salford Priors (Grafton Wood Colony)	SP0050 SP026525	2006	2006	P2	The Grafton colony now appears to be spreading into Warwickshire around Rough Hill Salford Coppice
Princethorpe Woods	SP3670 SP3870 SP3872 SP3672 SP380721 SP379721	Late 1940's 1968, 1997, 2004/05/06	2006	P2	Colony believed destroyed by intensive winter mechanical hedgerow management. Subsequent sighting and egg finds in 1997 and 2005/06 indicate a very small colony may still persist.

Small Blue - *Cupido minimus*

Colony History

2009	2008	2007	2006	2005	P1	P2	P3	Total Extinct	Pre 1990	1990-2000	2000-2005
		2	1		3 (2X)	1 (1X)	10(3X)	15	10	4	1

Meta-Population History

Total Known Pre 1990	Total Known Pre 2000	Total Known Pre 2005	Extant
1	1	1	1

Believed always has been 1 meta-population plus a number of isolated sites.

Action	Target	Progress	Comment
Increase/confirm 7 colonies by 2009.	7 Extant colonies.	3 colonies confirmed.	Increase known colonies by 4.
Between 2006 & 2009 resurvey all known and potential sites for the Small Blue.	Survey sites.	Sites surveyed.	Continue to survey potential sites for colonisation.
Increase to 7 colony sites monitored by 2009.	Monitor all extant sites.	1 site monitored.	Monitor 2 more sites.

Southam Lias Grasslands Meta-population

Small Blue -

2009	2008	2007	2006	2005	P1	P2	P3	Total Extinct	Pre 1990	1990-2000	2000-2005
		2	1		3 (2X)	1 (1X)	10(3X)	7	2	4	1

Change - Bishops Bowl, Nelsons Quarry and Southam Bypass priorities for survey.

Site Name	Grid Ref.	Year	Last Visit	Size	Comment
Southam Quarry	SP421635	2007	2007	D	Active Quarry - Colony stable. Colony under threat due to part of site being capped.
Bishops Itchington Hill/Heap	SP392584	2007	2007	C	Under threat of development. Colony under threat.
Bishops Bowl - Sports	SP384589	2006	2006	B	Not managed up for sale. Colony under threat.
Bishops Bowl - Fishing	SP385589	2004	2006	P2 X	Habitat improving. Colony vulnerable. To building of fishing lodges.

Nelsons Quarry	SP445643	1993	2007	P1 X	120 Kidney Vetch present. Potential site.
Southam Bypass - North	SP421626	N/A	2007	P1	500 Kidney Vetch plants planted in 2005 approx 60 flowered in 2007.
Stockton Cutting	SP439649	1988	2007	P1 X	6 kidney vetch plants present. 750 plugs planted in 2008 Potential site.
Ufton Fields (Man Orchid)	SP385617	1998	2007	P3 X	Kidney Vetch abundance needs re-survey.
Harbury Spoilbank - South	SP386598	1995	2007	P3 X	No habitat but a potential site.
Harbury Spoilbank - North	SP385602	1990	2006	P3 X	No habitat but a potential site.
Ufton Fields - Car park	SP378614	1976	2007	X	Habitat completely gone.
Ufton Hill Farm	SP392614	N/A	2006	P3	No habitat but a potential site.
Southam/Long Itchington Quarry Extension	SP428637	N/A	2006	P3	No habitat yet but a potential site.
Southam/Long Itchington Quarry Old Site	SP420642	N/A	2006	P3	No habitat yet but a potential site.
Napton Reservoir	SP467634	N/A	2006	P3	No habitat but a potential site.
Tomlow Disused Railway	SP462641	N/A	2006	P3	No habitat but a potential site.
Model Village Disused Railway	SP416643	N/A	2006	P3	No habitat but a potential site.
Napton Quarry	SP457613	N/A	2006	P3	No habitat but a potential site.

9 Extinct Small Blue Sites (Outside Core Area)

Site Name	Grid Ref.	Year	Size	Comment
Weddington North Cutting	SP364945	1984	X	2 Kidney Vetch found 1990's.
Wilmcote Rough	SP152578	1939	X	Habitat not suitable.
Oxhouse Farm Cutting	SP305508	1986	X	Habitat not suitable.
New Bilton Quarry	SP494759	1973	X	Habitat not suitable.
Oakley Wood verge	SP312574	1972	X	Habitat not suitable.
Banbury Road Verge	SP335575	1975	X	Kidney Vetch still plentiful but mown regularly.
Broom near Bidford	SP0852	1985	X	Habitat not suitable.
Newbold Quarry	SP494768	1914	X	Habitat not suitable.
Wolford	SP2232	19 th century	X	Habitat not suitable.

White Admiral - *Limenitis Camilla*

Colony History

2009	2008	2007	2006	2005	P1	P2	P3	Total Extinct	Pre 1990	1990-2000	2000-2005
		5	9	12	2		22	10	5	5	0

Meta-Population History

Total Known Pre 1990	Total Known Pre 2000	Total Known Pre 2005	Extant
6	6	6	6

Action	Target	Progress	Comment
Increase/confirm 30 colonies by 2009.	30 Extant colonies.	26 colonies confirmed.	Increase number of colonies by 4.
Between 2006 & 2009 resurvey all known and potential sites for the White Admiral.	Survey 59 sites.	39 sites surveyed.	Survey 20 more sites.
Increase to 7 colonies monitored by 2009.	7 sites to be monitored.	5 sites monitored.	Monitor 2 more sites.

Princethorpe Woodlands (11 Woods)

White Admiral -

2009	2008	2007	2006	2005	P1	P2	P3	Total Extinct	Pre 1990	1990-2000	2000-2005
		3	1	5		1 (1X)	1	1		1	

Change - One colony apparently lost, five colonies discovered probably due to more intensive surveying for larvae and ova. Willenhall Wood and the Coppice are priorities for survey.

Site Name	Grid Ref.	Year	Last Visit	Size	Comment
Ryton Wood	SP381725	2007	2007	D	Key Large Core Population.
Wappenbury/Princethorpe Great Wood	SP382710	2005	2007	C/D	Key Core Large Population 2005 survey found butterfly over entire complex.
New Close/Birchley Woods	SP406780	2006	2006	C	Key Core Medium Sized Population.
Weston/Waverley Woods	SP354706	2007	2007	B/C	Key Core Medium Sized Population.

Brandon Wood	SP394767	2005	2005	B	Key Medium Sized Population. Recent management should increase population size.
Bull & Butcher Wood	SP399718	2005	2005	A/B	Habitat suitable for small colony. Breeding population confirmed following egg/larval search in 2005.
South Cubbington Wood	SP352687	2005	2005	A/B	Small population. confirmed in 2005 following egg and larvae search Survey also found that habitat is limited due to poor woodland structure.
Bubbenhall Wood	SP368717	2007	2007	A/B	Survey in 2005 found habitat suitable for small to medium sized population.
North Cubbington Wood	SP351693	2005	2005	A	Only a very small suitable amount of habitat exists. Likely that population only exists due to proximity to Weston Wood.
Willenhall Wood	SP371763	1990's	2005	P2 X	Probable small colony habitat appears suitable. Egg search 2005 negative.
The Coppice, Ryton	SP393732	N/A	2005	P3	Habitat surveyed in 2005 and determined that it will only become suitable if more edge is created. Recommend a dog leg ride through centre of wood.

West Coventry (9 Woods)

White Admiral -

2009	2008	2007	2006	2005	P1	P2	P3	Total Extinct	Pre 1990	1990-2000	2000-2005
				1	2 (1X)		4 (1X)	4	4	0	0

Change - Increase in one colony probably due to more intensive surveying for ova and larvae. Tile Hill Wood, Crackley Wood, 3 Woods west of Coventry and Thickthorn priorities for resurvey.

Site Name	Grid Ref.	Year	Last Visit	Size	Comment
Chase Wood	SP256728	2005	2005	A/B	Habitat suitable for small colony.
Tile Hill Wood	SP278789	1950	2005	P1 X	Survey 2005 found habitat suitable for small to medium sized colony. News paper reported 2006 sighting needs resurvey.
Crackley Wood	SP289740	N/A	2006	P1	Survey in 2005 found that though habitat is improving only a small amount of habitat exists in the north of the wood. Coppicing of disused railway edge would double the amount

					of suitable habitat. Honeysuckle planted in suitable areas 2006.
Close Wood	SP254845	1951		P3 X	Previous survey found habitat suitable for small colony.
Birchley Hayes Wood	SP269848	N/A		P3	Previous survey found habitat suitable for small colony.
Meriden Shafts	SP261833	N/A		P3	Previous survey found habitat suitable for small colony.
Thickthorn	SP303705	N/A	2005	P3	Survey 2005 found habitat in north of wood suitable for small colony.
Bericote Wood (Stoneleigh)	SP353698	1954	2005	X Not Suitable	Survey in 2005 found habitat unsuitable. Inner part of wood coniferized little or no honey suckle present.
Wainbody Wood	SP319749	1953		X Not Suitable	Previous survey found habitat un suitable.

Mid Warwickshire (9 Woods)

White Admiral -

2009	2008	2007	2006	2005	P1	P2	P3	Total Extinct	Pre 1990	1990-2000	2000-2005
			2	2	1		1	0	0	0	0

Change - Increase in one colony probably due to more intensive surveying for ova and larvae. Itchington Holt, Bowshot Wood.

Site Name	Grid Ref.	Year	Last Year	Size	Comment
Ufton/Long Itchington Wood	SP388628	2005	2005	B	Stable medium sized colony. Could become large core population if rides coppiced in rotation.
Oakley Wood	SP306595	2006	2006	B	Stable small/medium sized colony.
Print Wood	SP388649	2005	2005	A/B	Small stable colony maintain by wide ride through centre of wood.
Hampton Wood	SP255598	2006	2006	A/B	Stable small/medium sized colony.
Itchington Holt	SP370557	N/A	2005	P1	Looks suitable for small colony needs further surveying. Egg/larvae search in 2005 negative.
Bath Hill	SP291531	N/A		Not Suitable	Habitat survey in 2005 found too small density of honeysuckle to support colony.
Bowshot Wood	SP304532	N/A		P3	Habitat needs surveying.

Chesterton Wood	SP342573	N/A		Not Suitable	Habitat survey in 2005 found too small density of honeysuckle to support colony.
Wellesbourne/Loxley Wood	SP267534	N/A		Not Suitable	Habitat survey in 2005 found too small density of honeysuckle to support colony. Most of wood appears recently clear felled.

South Warwickshire (3 Woods)

White Admiral -

2009	2008	2007	2006	2005	P1	P2	P3	Total Extinct	Pre 1990	1990-2000	2000-2005
			2				1				

Change - Increase in one colony probably due to more intensive surveying for ova and larvae.

Site Name	Grid Ref.	Year	Last Visit	Size	Comment
Wolford Wood	SP237335	2006	2006	B/C	Stable medium sized colony.
Whichford Wood	SP303342	2006	2006	A	Egg/larval search in 2005 confirmed small breeding colony.
Little Wolford Wood	SP275347	N/A	2006	V P3	Habitat survey in 2005 found too small density of honeysuckle to support colony. Wood largely coniferous. Needs resurvey vagrant sighting reported.

West Warwickshire (25 Woods)

White Admiral -

2009	2008	2007	2006	2005	P1	P2	P3	Total Extinct	Pre 1990	1990-2000	2000-2005
		2	3	2		4 (4 X)	14	4	0	4	0

Change - Two colonies have no recent records, one new colony discovered may be as a result of more intensive survey or could be new colonisation 17 woods in this area need survey, Austy Wood, Clowes Wood, Coldcomfort Wood, Alne Wood are priorities.

Site Name	Grid Ref.	Year	Last Visit	Size	Comment
Oversley Wood	SP104564	2007	2007	C	Stable medium sized population.

Snitterfield Bushes North and South	SP198604	2007	2007	B	Stable medium sized population.
Austy Wood	SP171628	1996	2005	P2 X	Medium sized colony maintained by wide ride through centre of wood. Recent sighting need confirming.
Coughton Park	SP064606	2006	2006	B	Colony confirmed in 2006 following egg/larval search.
Bearley Bushes	SP187604	2005	2005	A/B	Colony confirmed in 2005 following egg/larval search.
Hay Wood	SP210714	2006	2006	A/B	Colony confirmed in 2006 following egg/larval search.
Rough Hill Wood	SP054641	2006	2006	A	Colony confirmed in 2005 following egg/larval search.
Mays Wood	SP144646	2005	2005	A	Colony confirmed in 2006 following egg/larval search.
Withycombe Wood	SP142576	N/A		P3	Site needs habitat survey.
Bishops Hill	SP140536	N/A		P3	Site needs habitat survey.
Pearsons Wood	SP063551	N/A		P3	Site needs habitat survey.
Weethly Wood	SP044559	N/A		P3	Site needs habitat survey.
Clowes Wood	SP101741	1998	2006	P2 X	Colony not confirmed in 2005 following egg/larval search. Habitat located requires further survey.
Thornhill Wood	SP059565	N/A		P3	Site needs habitat survey.
Fan End	SP232748	N/A		P3	Site needs habitat survey.
Poors Wood	SP245733	N/A		P3	Site needs habitat survey.
Windmill Naps	SP094724	N/A		P3	Site needs habitat survey.
Mockley Wood	SP121688	N/A		P3	Site needs habitat survey.
Arnolds Wood	SP134727	N/A		P3	Site needs habitat survey.
Old Park//Three Oak Hill Wood	SP061581	N/A		P3	Site needs habitat survey.
Coldcomfort Wood	SP069583	1994		P2 X	Site needs habitat survey.
Spernal Park	SP105628	N/A		P3	Site needs habitat survey.
Salford Coppice	SP042520	N/A		P3	Site needs habitat survey.
Alne Wood	SP107613	1947		P 2X	Site needs habitat survey.
Bannams Wood	SP114643	N/A		P 3	Site needs habitat survey.

North East Warwickshire (6 Woods)

White Admiral -

2009	2008	2007	2006	2005	P1	P2	P3	Total Extinct	Pre 1990	1990-2000	2000-2005
		1	2	2		1 (1 X)	2	1		1	

Change - Hoar Park, Arley Wood, Hobley Furse are priorities for survey.

Site Name	Grid Ref.	Year	Last Visit	Size	Comment
Bentley/Monks Park Woods	SP290960	2005	2005	A	Habitat survey 2005 found only limited amount of suitable Honeysuckle.
Kingsbury Wood	SP233976	2006	2006	B	Site needs surveying.

Hartshill Hayes	SP321545	2007	2007	B	Stable small colony.
Hoar Park	SP265933	N/A	2005	P3	Habitat survey 2005 found only limited amount of suitable Honeysuckle.
Arley Wood	SP278911	N/A	2005	P3	Habitat survey 2005 found only reasonable amount of suitable Honeysuckle.
Hobley/Cottons Furse Long Spinney	SP473856	1996	2005	P2 A	Habitat survey 2005 found only limited amount of suitable Honeysuckle.

Purple Emperor - *Apatura iris*

Colony History

2009	2008	2007	2006	2005	P1	P2	P3	Total Extinct	Pre 1990	1990-2000	2000-2005
		3			2		6	6	6	0	3

Meta-Population History

Total Known Pre 1990	Total Known Pre 2000	Total Known Pre 2005	Extant
5	0	2	2

Action	Target	Progress	Comment
Increase/confirm presence in 5 woods by 2009.	Presence in 5 woods.	Confirmed in 3 woods.	Increase known congregation areas to 5 woods.
Between 2006 & 2009 survey all known and potential sites for the Purple Emperor.	Survey 11 woodland blocks.	5 woods surveyed.	Survey 6 more woods.
Increase to 2 colonies monitored at male congregation areas by 2009.	2 woods to be monitored.	1 colonies monitored.	Monitor congregation areas in 1 more wood.

If the Purple Emperor persists in the long term in Warwickshire as a result of the 2004 release then conservation efforts to aid its survival should be considered. Now has bred for 3 years 3 colonies considered established.

Princethorpe Woodlands

Purple Emperor -

2009	2008	2007	2006	2005	P1	P2	P3	Total Extinct	Pre 1990	1990-2000	2000-2005
		2			2		4	0			

The other 6 blocks of woodland are priorities for survey. In addition a sighting at Coombe Abbey Country Park to the north of this complex requires survey.

Site Name	Grid Ref.	Year	Last Visit	Size	Comment
Ryton Wood	SP381725	1943 A/B 2007 4 congregation areas identified	2007	B	Approx 163 individuals released in 2004. Now has bred for 3 years colony established.

Wappenbury / Princethorpe Great Wood	SP382710	1914-18 A/B 2007 1 congregation area identified	2007	B	Approx 50 individuals released in 2004. Now has bred for 3 years colony established
The Coppice Ryton	SP393732	No known records		P3	Potential Habitat.
Bull and Butcher Wood West / East	SP399718	No known records		P3	Vacant Habitat.
Bubbenhall Wood	SP368717	No known records	2007	P1	Potential Habitat.
Weston/Waverley Wood	SP354706	No known records	2007	P1	Vacant Habitat.
North Cubbington Wood	SP351693	No known records		P3	Potential Habitat.
South Cubbington Wood	SP352687	No known records		P3	Potential Habitat.

Oversley Woodlands

Purple Emperor -

Nearby blocks of woodland situated on high ground need investigation. Woods at Grove Hill and Red Hill are priorities.

2009	2008	2007	2006	2005	P1	P2	P3	Total Extinct	Pre 1990	1990 - 2000	2000 - 2005
		1					2	0			

Site Name	Grid Ref.	Year	Last Visit	Size	Comment
Oversley Wood	SP104564	No known records 2007. One congregation area identified.	2007	N/A B	Approx 80 individuals released in 2004. 1 sighting known. Now has bred for 3 years colony established
Grove Hill	SP119557	No know records		P3	Potential Habitat.
Red Hill	SP135562 SP128560	No known records		P3	Potential Habitat.

9 Extinct Purple Emperor Sites (Outside Core Area)

Site Name	Grid Ref.	Year	Size	Comment
Brandon Wood Coombe Abbey 10 k area	SP3070	19 th Century	P3 X	Sighting of Purple Emperor in 2006 needs following up may have colonised from Ryton Wood
Ettington Park 10 k area	SP2040	19 th Century	X	
Oakley Wood 10 k area	SP3050	19 th Century	X	
Wolford Wood 10 k area	SP2030	19 th Century	X	

Dark Green Fritillary - *Argynnis aglaja*

Colony History

2009	2008	2007	2006	2005	P1	P2	P3	Total Extinct	Pre 1990	1990-2000	2000-2005
		1				1 (1X)	12 (2X)	13	13	0	0

Action	Target	Progress	Comment
Increase/confirm 2 colonies by 2009.	2 extant colonies.	1 colony confirmed.	Increase colonies by 1.
Between 2006 & 2010 resurvey all known and potential sites for the Dark Green Fritillary.	Survey 19 sites.	18 sites surveyed.	Survey 1 more site.
Continue to monitor only colony by 2009.	Monitor 1 colony.	1 colony monitored.	Continue to monitor only known extant colony.

Kineton Lias Grasslands

Dark Green Fritillary -

2009	2008	2007	2006	2005	P1	P2	P3	Total Extinct	Pre 1990	1990-2000	2000-2005
		1					3	1	1	0	0

Continue to monitor both adult butterflies (timed count) and habitat at both meadows at Oxhouse Farm.

Site Name	Grid Ref.	Year	Last Visit	Size	Comment
Oxhouse Farm Top Meadow	SP306507	2007	2007	B	Stable but small colony. Managed by winter cattle grazing.
Oxhouse Farm Bottom Meadow	SP304509	N/A	2007	P3	Liaison with Natural England and new owner will try and clear this heavily scrubbed meadow.
Wellesbourne/Loxley Wood	SP267534	1920	2005	X	Survey in 2005 found no suitable habitat.
Kineton Army base	SP3040	N/A	2006	P3	Survey 2005 only found limited suitable habitat.
Gaydon Rover proving ground	SP3050	N/A	1998	P3	Potential extensive site needs detailed survey.

Southam Lias Grasslands

Dark Green Fritillary -

This is the most suitable potential meta-population area for the Dark Green Fritillary as it contains the most vacant habitat (Slater, 2004, *Habitat and Violet Survey of All Sites*). This area also contains the Dark Green Fritillary preferred habitat type of open calcareous grasslands. Priority carryout violet survey at all sites.

2009	2008	2007	2006	2005	P1	P2	P3	Total Extinct	Pre 1990	1990-2000	2000-2005
							6 (1X)	1	1	0	0

Site Name	Grid Ref.	Year	Last Visit	Size	Comment
Harbury Spoilbank	SP386598	1985	2007	X P3	Some vacant habitat.
Stockton Cutting	SP439649	1976	2007	Vagrant P3	Some vacant habitat following clearance in 2008.
Ufton Fields	SP383615	1985	2007	Vagrant	Insufficient habitat.
Bishops Heap/Hill	SP392584	N/A	2007	P3	Some vacant habitat.
Bishops Bowl	SP384589	N/A	2006	P3	Some vacant habitat.
Southam/Long Itchington Quarry	SP421635	N/A	2007	P3	Some vacant habitat.
Nelsons Quarry	SP445643	N/A	2007	P3	Some vacant habitat.

Princethorpe Woodlands

Dark Green Fritillary -

This meta-population area contains vacant habitat (Slater, 2004, *Habitat and Violet Survey of All Sites*). The vacant habitat is all within the Dark Green Fritillaries secondary habitat preference type.

2009	2008	2007	2006	2005	P1	P2	P3	Total Extinct	Pre 1990	1990-2000	2000-2005
						1 (1X)	3 (1 X)	4	4		

Site Name	Grid Ref.	Year	Last Visit	Size	Comment
Brandon Wood	SP394767	1919	2006	X P3	Some vacant habitat.
New Close Wood	SP406776	1947	2006	X	No habitat left.
Ryton Wood	SP381725	1985/2004	2007	X & V	Occasional vagrants.
Ryton Wood Meadows	SP376725	2005	2007	Vagrant P3	Some vacant habitat. DGF seen 2004 & 2005.
Waverley Wood	SP354706	Early 1950s 1975	2007	X P2	Some vacant habitat.
Frankton Wood	SP416713	1975	?	V Not suitable	Habitat no longer suitable.

South Cubbington Wood	SP352687	1976	2005	V Not suitable	Habitat no longer suitable.
Wappenbury Wood	SP382710	N/A	2007	P3	Some vacant habitat.

Earles Wood / Austy Wood

Dark Green Fritillary -

Series of historical sites. There appears to be no remaining suitable habitat.

2009	2008	2007	2006	2005	P1	P2	P3	Total Extinct	Pre 1990	1990-2000	2000-2005
								7	7		

Site Name	Grid Ref.	Year	Last Visit	Size	Comment
Earlswood	SP115737	1941		X	No vacant habitat.
Clowes Wood	SP101741	1948		X	No vacant habitat.
Austy Wood	SP171628	1948		X	No vacant habitat.
Wilmcote Rough	SP152578	1948		X	No vacant habitat.
Wolford	SP2030	19 th Century		X	No vacant habitat.
Coleshill	SP2080	19 th Century		X	No vacant habitat.
Knowle	SP1070	19 th Century		X	No vacant habitat.

Silver-washed Fritillary - *Argynnis paphia*

Colony History

2009	2008	2007	2006	2005	P1	P2	P3	Total Extinct	Pre 1990	1990-2000	2000-2005
		5	5			1 (1X)		9	8	1	0

Action	Target	Progress	Comment
Increase/confirm 10 colonies by 2009.	10 Extant colonies.	10 colonies confirmed.	Maintain 10 colonies.
Between 2006 & 2009 resurvey all known and potential sites for the Dingy Skipper.	Survey 19 sites.	18 sites surveyed.	Survey extra site.
Increase to 5 colonies monitored by 2009.	Monitor 5 colonies.	5 sites monitored.	Maintain monitoring levels.

Silver-washed Fritillary -

The target in 1997 was to increase the number of colonies in Warwickshire to 3. The target for 2007 was to increase the number of colonies to 6 this has been achieved. The new target is to increase the number of colonies to 10 by 2009. All of the below Silver-washed Fritillary sites and potential sites have been surveyed to determine violet populations and potential breeding areas (Slater, 2004).

Priorities for survey are Coughton Park, Hampton Wood, Wappenbury Wood, Ufton Wood and Bubbenhall Wood.

Site Name	Grid Ref.	Year	Last Visit	Size	Comment
Wolford Wood	SP237335	2006	2006	C 10-20 at peak	Colony believed established in 2000. Stable, increasing.
Ryton Wood	SP381725	2007	2007	B/C 9-12 at peak	Colony believed established in 1987. Increasing.
Snitterfield Bushes	SP199604	2007	2007	B 3-5 at peak	Colony believed established in 2003.
Wappenbury Wood	SP375710	2007	2007	A	It is believed a small colony has established itself. An increase in coppicing should increase the colony size.
Ufton Wood	SP382628	1997	2006	X P2	Yorkshire visitor – Ufton graveyard in 1997 and saw 3 SWF. Wood has habitat suitable for small colony 3-5 at peak. Survey in 2005/06

					found no adults. Colony still believed to be present.
Oakley Wood	SP306595	2006	2006	A	Habitat survey in 2005 found sufficient habitat to maintain small colony. Believed colony has become established. Increase in felling of pines will secure colonies establishment.
Weston/Waverley Woods	SP354706	2006	2006	B	Believed small colony has been established following thinning of conifers.
Bubbenhall Wood	SP366717	2007	2007	A	Possible small colony established along old conveyor belt ride. Further survey required.
Coughton Park	SP064606	2006	2006	A/B	Reported that SWF had been seen in 2004/05. Survey in 2006 found no adults. Habitat found suitable for small colony following thinning of conifers. Requires further survey.
Hampton Wood	SP255598	2006	2006	A	Small well managed wood with habitat suitable for small colony. Requires further survey.
Oversley Wood	SP104564	2007	2007	B	Colony established following thinning of conifers.

Silver-washed Fritillary - 8 Extinct Sites

Site Name	Grid Ref.	Year	Last Visit	Size	Comment
Alne Wood	SP107613	1947		X	Not suitable.
Bannans Wood	SP114643	1975	2006	X	Not suitable.
Brandon Wood	SP394767	1949	2006	X	Not suitable.
Clowes Wood	SP101741	1947	2006	X	Not suitable.
Loxley/Wellesbourne Wood	SP267534	1923	2006	X	Marginally suitable.
Princethorpe Great Wood	SP389712	1967	2006	X	Not suitable.
Tile Hill Wood	SP278789	1935	2006	X	Not suitable.
Wootton Wawen (Austy Wood)	SP171628	1949	2006	X	Not suitable.

Warwickshire 10k Squares

	SK 10 00 Hill Wood area	SK 20 00 Alvecote Pools	SK 30 00 Orton on the Hill Area		
SP 00 90 Sutton Park West	SP 10 90 Sutton Park East	SP 20 90 Whitacre Heath	SP 30 90 Weddington Disused Railway	SP 40 90 Ashby de la Zouche Canal	
SP 00 80 Woodgate Park	SP 10 80 Shadow Brooke Meadow	SP 20 80 Meriden Shafts	SP 30 80 Wyken Slough	SP 40 80 Shilton Switchback	SP 50 80 Severn Trent Churchover
SP 00 70 Clowes Wood	SP 10 70 Book Meadows	SP 20 70 Knowle Hill	SP 30 70 Ryton Wood	SP 40 70 Draycote Water	SP 50 70 Ashlawn Cutting
SP 00 60 Coughton Park	SP 10 60 Henley Sidings	SP 20 60 Leek Wootton	SP 30 60 Ufton Fields	SP 40 60 Stockton Cutting	SP 50 60 Wolfhamcote Cutting
SP 00 50 Oversley Wood	SP 10 50 Wilmcote Quarry	SP 20 50 Oxhouse Farm	SP 30 50 Kineton Army	SP 40 50 The Tunnels	SP 50 50 Bromtrees
SP 00 40 Cleve Hill	SP 10 40 Long Marston	SP 20 40 Ilmington	SP 30 40 Old Lodge Farm Quarry	SP 40 40 National Herb Centre	
		SP 20 30 Wolford Wood	SP 30 30 Whichford Wood		
		SP 20 20 X Hands Quarry			

Suggested Target Locations & Missing Species

	SK 10 00 SS,ES,LS,B,SW,GV,OT,PH, WLH,SC,CB,HB,RA,PL,ST,P ,C,SP,G,MB,R,SH.	SK 20 00 ES,WLH.	SK 30 00 SS,ES,LS,B,LW,SW,GV,OT, PH,LH,SC,CB,HB,RA,PL,ST, P,C, SP,G,MB,R,SH.		
SP 00 90 SS,ES,LS,B,GV,OT,PH, WLH,SC,CB,HB,RA,PL,P,C, R,SH.	SP 10 90 SS,ES,WLH,SC,R,SH.	SP 20 90 ES.	SP 30 90	SP 40 90 ES,LS,PH,WLH,HB,RA,PL, C, SH.	
SP 00 80 SS,ES,LS,B,SW,GV,OT,PH, WLH,SC,CB,HB,RA,PL,ST, P,C, SP,G,MB,R,SH.	SP 10 80	SP 20 80 PH,WLH.	SP 30 80 PH,WLH.	SP 40 80 SS,ES,PH,WLH,SC,CB,HB, PL,C,MW,G,SH.	SP 50 80 SS,ES,PH,WLH,SC,CB,RA, PL, C,SH.
SP 00 70 SS,ES,LS,B,GV,OT,PH, WLH,SC,CB,HB,RA,PL,C,S P,MB,R.	SP 10 70 PH,WLH.	SP 20 70 WLH.	SP 30 70	SP 40 70 PH.	SP 50 70 PH.
SP 00 60 ES,WLH,MW.	SP 10 60 ES,WLH,HB.	SP 20 60	SP 30 60 SH.	SP 40 60 ES,PH.	SP 50 60 PH,WLH.
SP 00 50 SS,ES,B,PH,WLH,MW,SH.	SP 10 50	SP 20 50	SP 30 50 PH.	SP 40 50 PH,SC,MW,SH.	SP 50 50 SS,ES,B,LW,SW,GV,PH,WL H,SC,CB,HB,RA,PL,ST,P,C, SP,G, MB,R,SH,MW.
SP 00 40 SS,ES,B,LW,SW,GV,OT,PH, WLH,SC,HB,RA,PL,G,SH.	SP 10 40 SS,ES,PH,WLH,LW,OT,SC, HB, MW,G.	SP 20 40 WLH.	SP 30 40 ES,PH,WLH,SC,RA,C,MW, SH.	SP 40 40 OT,PH,WLH,HB,SH.	
		SP 20 30 PH,WLH,HB.	SP 30 30 ES,PH,WLH,MW,SH.		
		SP 20 20 SS,ES,B,GV,PH,WLH,SC,H B,RA,ST,C,R,SH.			

Butterfly Sites

	SK 10 00	SK 20 00 Doultons Heather site SK219 018 Pooley Fields West SK257 035 DS Pooley Fields East SK260 036 DS	SK 30 00		
SP 00 90 Sutton Park Longmore Valley SP08 94, GH Sutton Park Golf Course SP08 06, GH Sutton Park Streetly SP08 08 GH	SP 10 90 Sutton Park Boldmere SP10 94, GH Sutton Park Transects SP10 96, GH Sutton Park Bracebridge Pool SP10 98 GH?	SP 20 90 Baddesley Common SP274 976 DS Bentley Park Wood SP290 960, WA Rush Lane Dosthill SP220 996, DS Rush Lane Old Clay Pit SP217 994 DS Rush Lane Dosthill Restored Landfill SP215 990 DS Grendon Common SP278 981, DS Kingsbury Spoilheap SP234 982, DS Kingsbury Link SP230 981 DS Kingsbury Riffle Range SP227 962 DS Kingsbury Wood SP233 976, WA	SP 30 90 Purley Quarry SP305 966, DS Windmill Hill SP337 939, DS Hartshill Hayes SP323 945 WA Anchor Pools Hartshill SP337944 DS Judkins Quarry SP348 930 DS:? Mancetter Quarry SP307 958 DS Weddington Disused Railway South SP357 935 DS	SP 40 90	
SP 00 80	SP 10 80	SP 20 80 Close Wood SP254 845, WA?	SP 30 80 Newdigate Pit SP338 869, DS	SP 40 80 Cotton & Hobley Furze SP475 854 WA? Coombe Abbey SP401 803 PE?	SP 50 80
SP 00 70 Clowes Wood SP099 730, WA?	SP 10 70 Clowes Wood SP101 741, WA?	SP 20 70 Chase Wood SP256 726 WA Crackley Wood. SP289 740 WA? Hay Wood SP210 714 WA	SP 30 70 Brandon Wood SP394 767, WA Bull & Butcher Wood SP399 718, WA Ryton Wood SP380726, GS?, WW, WA, PE, SWF, Ryton Wood Meadows SP376 726, DSk, GS, GH, WW Bubbenhall Wood & Meadows SP366 77 DS?, GH?, WA, PE?, SWF Gt Princethorpe Wood SP389 712, WA Waverley/Weston Wood SP354 706, WA, PE?, SWF Willenhall Wood SP371 763, WA? North Cubbington Wood SP351 693 WA South Cubbington Wood SP352 687 WA Old Nunn Wood SP383 707 WA Pagets Pool SP374 72 GS? Ryton Country Park SP371 724 GH? Wappenbury Wood SP375 70 WA, PE, SWF?	SP 40 70 Draycote Water Farnborough Dam SP468694 GS Draycote Water Hensborough SP466 698 GS? Draycote Water Water Treatment SP452 698 GS Draycote Embankment, SP447 706 GS? Malpass Quarry SP489 759 GS, GH New Close/Birchley Wood SP406 780, WA	SP 50 70 Rainsbrook Embankment SP516 719, GH?

<p>SP 00 60 Coughton Park SP064 606 WA, SWF? Rough Hill Wood SP054 64 WA</p>	<p>SP 10 60 Alne Wood SP07 613 WA? Austy Wood SP171 628 WA? Bearley Bushes SP187 604 WA Mays Wood SP144 646 WA Snitterfield Bushes North SP199 606, GS, WA, SWF Snitterfild Bushes South SP98 602 GS, WA, SWF</p>	<p>SP 20 60</p>	<p>SP 30 60 Harbury Spoilbank North SP385 602 DS, GS,GH Print Wood SP388 649 WA Snowford Cutting SP383 665 GH Ufton Fields SP385 67 DS?, GS, GH? Ufton Wood SP388 628 WA, SWF?</p>	<p>SP 40 60 Napton Quarry SP457 613 GS? Nelsons Quarry SP445 643 DS?, GS, GH Southam Quarry SP421 635 DS, GS, GH, SB Southam Quarry Old Site SP419 644 GS Stockton Cutting SP439 649 DS?, GS, GH Tithe Fm. Cutting SP407677 GS?</p>	<p>SP 50 60 Flecknoe Embankment SP520 624 GS Newbold Grounds Cutting SP520 608 GS? Wolfhampcote Cutting SP524 645 DS?, GS, GH</p>
<p>SP 00 50 Cold Comfort Wood SP069584, WA</p>	<p>SP 10 50 Grove Hill, SP119 557, GSk?, Oversley Wood, SP104 564, GS?, WA, PE, SWF Wilmcote Rough SP152578, GS Wilmcote Quarry SP152 593, GS</p>	<p>SP 20 50 Hampton Wood SP255 598, WA Coombe Farm Embankment SP238 509 DS, GS</p>	<p>SP 30 50 Bishop Bowl fishing SP385 589 GS,GH?,SB?,DS? Bishop Bowl water sports SP384 589 GS, SB,DS,GH? Bishops Bowl Blue Lagoon SP390 587 GS Bishop Itchington/Hill SP392 584, DS, GS, SB,GH Gaydon Proving ground SP346 544, DS,GS Hell Hole SP305 540, GS? Kineton Gate/Railway Crossing SP359 505 DS, GS Kineton Boating Lake SP370 515 DS, GS Kineton Boundary Pond SP356 512, DS, GS Kineton Demo Ground SP380 450, DS?, GS? Kineton Falcon Firs SP366 500 DS, GS Kineton Fleabane site SP367 505, DS, GS Kineton Graceground Coppice SP355 494 DS, GS Kineton Lab 12 SP375 513 GS? Kineton Lower Oaks SP349 488, DS, GS, Kineton Marshalling Yard SP373 520, DS? GS? Kineton Marshalling/Stabling Yard SP364 517, DS?, GS Kineton Owlings Pond SP360 51, GS? Kineton Pheasantries SP360498, GS, Kineton Telegraph Wood SP366 490, DS, GS? Lighthorne Heath SP345 565, DS, GS Oxhouse Farm East SP306 507 DGF Oakley Wood SP306 595 WA Harbury Spoilbank South SP386 598, DS, GS, GH Heritage Motor Cntr. SP358548 DS, GS</p>	<p>SP 40 50 Fenny Compton Tunnels SP437 523,GS,</p>	<p>SP 50 50</p>

<p>SP 00 40</p>	<p>SP 10 40 Long Marston Pond SP164 474, GS Long Marston Centre Roads SP163 477 GS Long Marston Storage SP156 473, GS Long Marston Sidings SP157 467, GS The Greenway Industrial Area SP152 473 GS</p>	<p>SP 20 40 Ettington Grove SP256 488, DS?, GS? Ettington Cutting SP265 485 DS, GS</p>	<p>SP 30 40</p>	<p>SP 40 40</p>	
		<p>SP 20 30 Wolford Wood SP237 335, WW, WA, SWF,</p>	<p>SP 30 30 Whichford Wood East SP303 342, WA</p>		
		<p>SP 20 20</p>			