

003366Weston Wood
31st May, 2013

B & F	Species Name	1	2	3	4	5	6	7	TOTAL	Comment
17	Common Swift						22	1	23	
34	<i>Ectoedemia occultella</i>	2	2			1		1	6	
37	<i>Ectoedemia albifasciella</i>					1			1	
117	<i>Stigmella confusella</i>		2						2	1f Gen. Det. MK
128	<i>Phylloporia bistrigella</i>					1			1	
130	<i>Incurvaria masculella</i>	2	1	6	2	6		1	18	
138	<i>Lampronia fuscata</i>		1						1	3rd county record
140	<i>Nematopogon swammerdamella</i>	1	12	3	6	9	2	3	36	1f(2) Gen. Det. MK
225	<i>Triaxomera fulvimitrella</i>		1						1	
228	<i>Monopis weaverella</i>		1						1	
274	<i>Bucculatrix ulmella</i>		1						1	
286x	<i>Caloptilia alchimiella/robustella</i>		1			1			2	
301	<i>Parornix betulae</i>	2			2				4	4m Gen. Det. MK/SH
309	<i>Deltaornix torquillella</i>							1	1	1f Gen. Det. AP
326	<i>Phyllonorycter blancardella</i>				1				1	1f Gen. Det. AP
353	<i>Phyllonorycter ulmifoliella</i>	2	2						4	
436	<i>Pseudoswammerdamia combinella</i>				1				1	
437	<i>Swammerdamia caesiella</i>	2	2					1	5	
447	<i>Roeslerstammia erxlebella</i>			3		1			4	
602	<i>Elachista apicipunctella</i>		1						1	1m Gen. Det. MK
607	<i>Elachista canapennella</i>	1	1		2		1	2	7	
648	White-shouldered House-moth	1							1	
770	<i>Carpatolechia proximella</i>	5	1		1				7	
822	<i>Scrobipalpa acuminatella</i>				1				1	
968	<i>Cochylis nana</i>		1						1	
986	<i>Syndemis musculana</i>	6	10	11	4	4	1	12	48	
1007	<i>Capua vulgana</i>	6	4	2				2	14	
1015	<i>Eulia ministrana</i>		2						2	
1106	<i>Lobesia reliquana</i>			1					1	
1120	<i>Ancylis mitterbacheriana</i>		1	1	1			1	4	
1132	<i>Epinotia subocellana</i>	2	5		1				8	
1136	<i>Epinotia immundana</i>	2	8		1			1	12	
1137	<i>Epinotia tetraquetra</i>	4	8		1			1	14	
1217	<i>Eucosmomorpha albersana</i>		1		1				2	
1334	<i>Scoparia ambigualis</i>		1						1	
1645	SCALLOPED HOOK-TIP		3		3	2	1	2	11	
1646	OAK HOOK-TIP				1				1	
1647	BARRED HOOK-TIP					1			1	
1648	PEBBLE HOOK-TIP	6	2		1			3	12	
1680	MAIDEN'S BLUSH	2	1	1	1			1	6	
1682	BLOOD-VEIN	1							1	
1693	CREAM WAVE					1			1	
1724	RED TWIN-SPOT CARPET			1	1				2	
1738	COMMON CARPET		1						1	
1750	WATER CARPET	1							1	
1759	SMALL PHEONIX	1		1	1				3	
1760	RED-GREEN CARPET	1		1					2	
1773	BROKEN-BARRED CARPET	3							3	
1776	GREEN CARPET	1	2		5	5	2	2	17	
1795	NOVEMBER MOTH							1*	0	*Larva
1802	RIVULET				1				1	
1834	COMMON PUG		1						1	

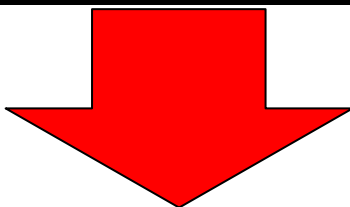
003366Weston Wood
31st May, 2013

1852	BRINDLED PUG	5		1	2	1		1	10	1f (g) Gen. Det. AP
1853	OAK-TREE PUG			1		1			2	
1875	SMALL WHITE WAVE	2		3			1		6	
1879	SERAPHIM	3	1	2				1	7	
1883	YELLOW-BARRED BRINDLE	2			1				3	
1887	CLOUDED BORDER	9	2	3	7	1		1	23	
1902	BROWN SILVER-LINE	10	1		7		9	4	31	
1903	BARRED UMBER	1	3	1	1	1		1	8	
1904	SCORCHED WING	1		4				1	6	
1906	BRIMSTONE MOTH	2	1	2	1	2			8	
1920	SCALLOPED HAZEL	5	2	1	5		1		14	
1944	PALE OAK BEAUTY		1			1			2	
1950	BRINDLED WHITE-SPOT							1	1	
1951	GREY BIRCH		1						1	
1955	COMMON WHITE WAVE	1					1		2	
1956	COMMON WAVE	2	1						3	
1957	WHITE-PINION SPOTTED	2				1			3	
1958	CLOUDED SILVER				1				1	
1979	LIME HAWK-MOTH			2					2	
1981	POPLAR HAWK-MOTH	3			2		1	4	10	
2000	IRON PROMINENT		1						1	
2003	PEBBLE PROMINENT	2	1		1			2	6	
2005	GREAT PROMINENT							1	1	
2006	LESSER SWALLOW PROMINENT	1	3	1	2		4	1	12	
2007	SWALLOW PROMINENT						1		1	
2008	COXCOMB PROMINENT	1	1			1		2	5	
2011	PALE PROMINENT	2					2		4	
2019	CHOCOLATE-TIP	12	2					3	17	
2028	PALE TUSSOCK	2	2		1	1	2		8	
2043	ORANGE FOOTMAN	4	1	1	2	1	1	4	14	
2063	MUSLIN MOTH			2					2	
2078	LEAST BLACK ARCHES		1						1	
2190	HEBREW CHARACTER	1						1	2	
2302	BROWN RUSTIC		1						1	
		127	106	55	72	44	52	63	519	

Beetle	Common Cockchafer (<i>Melolontha melolontha</i>)							1	1	2	
---------------	--	--	--	--	--	--	--	---	---	---	--

Recorders & Trap Grid References		
1	M. Kennard (80)= SP 3550 7031	80w MV
2	M. Kennard (p)= SP 3541 7031	125w MV
3	M. Kennard (a)= SP 3536 7027	30w Actinic
4	R. Ward= SP 3541 7035	125w MV
5	S. Hackett= SP 3539 7030	125w MV
6	A. Prior/V. Weston(Far)= SP 3536 7024	125w MV
7	A. Prior/V. Weston(Gen)= SP 3539 7024	125w MV

Time: 21:45 > 04:15
Temp: 12.7 °C > 8.3 °C
Wind: SW 3 > 1
Clear

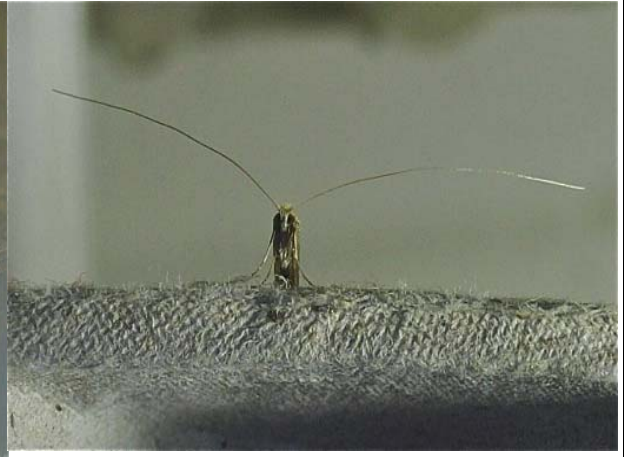


003366Weston Wood
31st May, 2013

Weston Wood Moths 31st May, 2013



17 Common Swift (*Hepialus lupulinus*)



140 *Nematopogon swammerdamella*



225 *Triaxomera fulvimitrella* (Photo: M. Kennard)



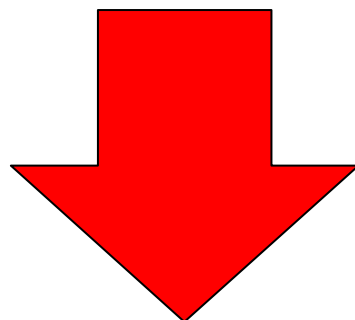
1120 *Ancylis mitterbacheriana*



1647 Barred Hook-tip (*Watsonalla cultraria*)



1879 Seraphim (*Lobophora halterata*)



003366Weston Wood
31st May, 2013



1904 Scorched Wing (*Plagodis dolabraria*)



1950 Brindled White-spot (*Parectropis similaria*)



1979 Lime Hawk-moth (*Mimas tiliae*)



2005 Great Prominent (*Peridea anceps*)



2019 Chocolate-tip (*Clostera curtula*)



2028 Pale Tussock (*Calliteara pudibunda*)